

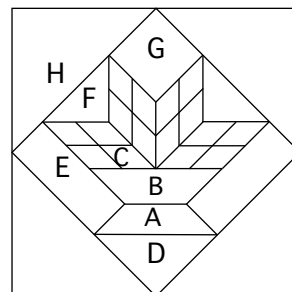
Flower Basket

A **BLOCKaWEEK** pattern from jinyybeyer.com

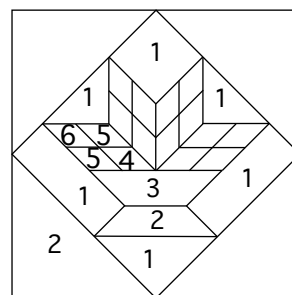


Jinny Beyer, 2006

Template Guide



Fabric Placement



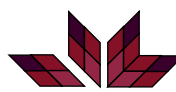
Make 4 for each block



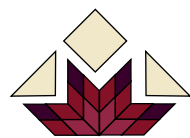
Make 4 for each block



Make 4 for each block



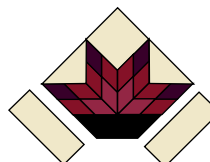
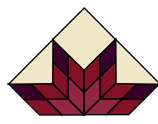
Make 1 for each block



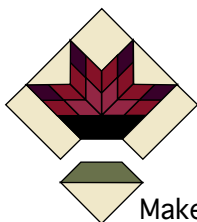
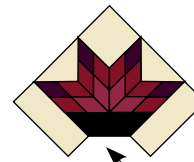
Make 1 for each block



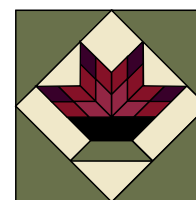
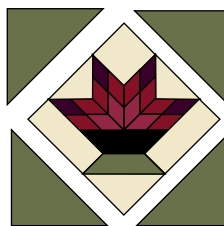
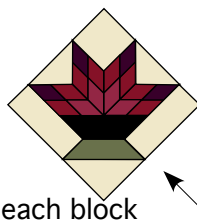
Make 1 for each block



Make 1 for each block



Make 1 for each block



The fabrics used in this block are from the Jinny Beyer Palette Fabric Collection and other Jinny Beyer prints. Exact duplication of the block will depend on the availability of the prints. The design of the pattern shown here is a 10" block. Different fabric placement will occur when making the block in one of the other two sizes.

Block 0126

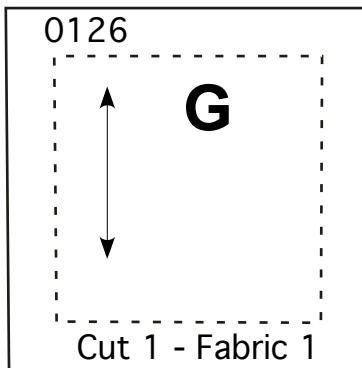
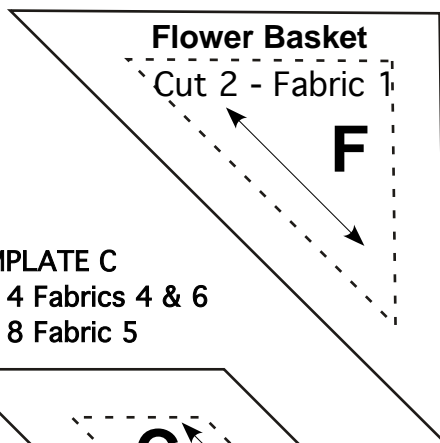
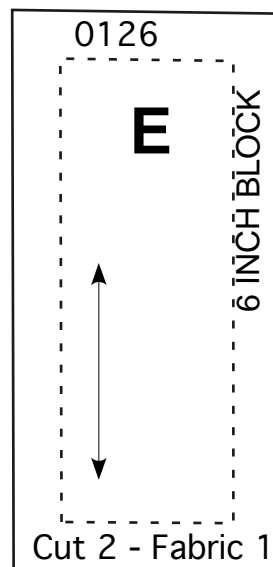
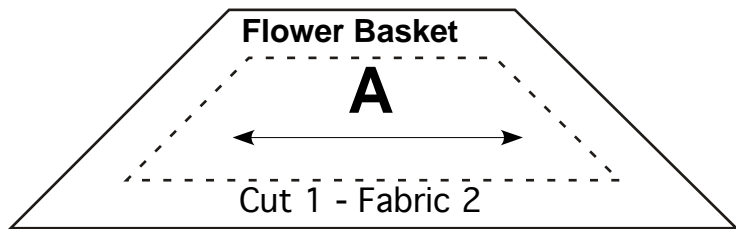


JINNY BEYER STUDIO 776 Walker Rd. GREAT FALLS, VA 22066
703-759-0250 FAX 703-759-0739 TOLL FREE: 866-760-7373 www.jinyybeyer.com

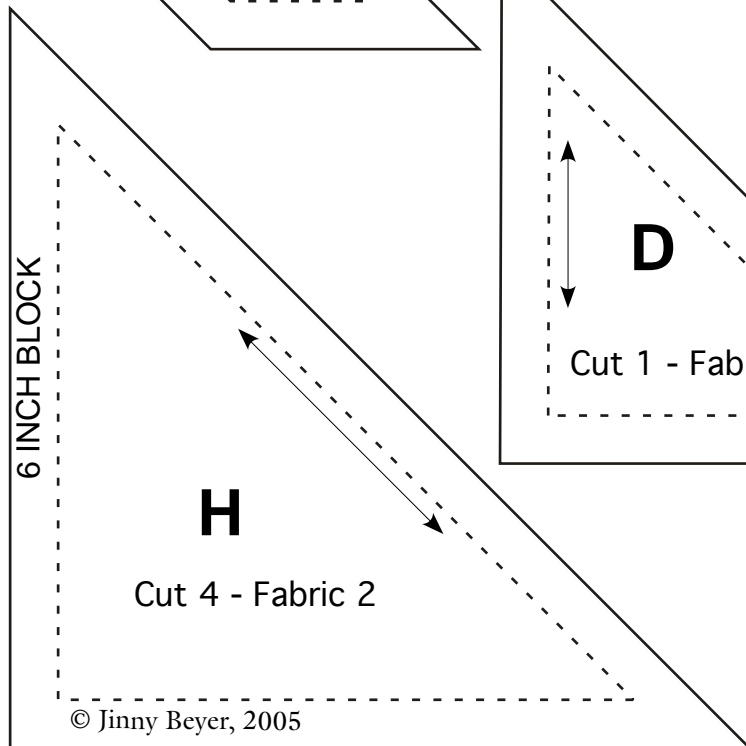
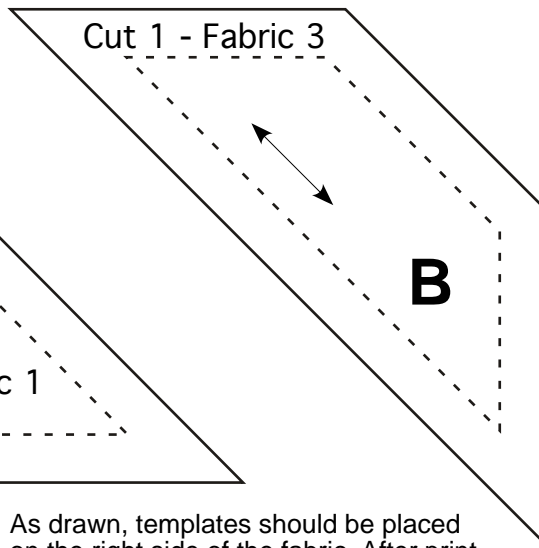
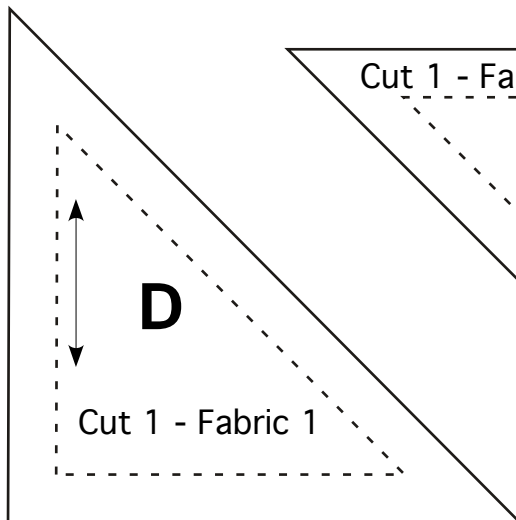
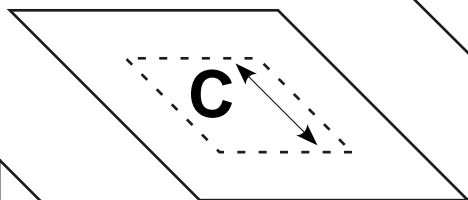
©Jinny Beyer, 2005

Flower Basket

A **BLOCKaWEEK** pattern from jinnybeyer.com



TEMPLATE C
Cut 4 Fabrics 4 & 6
Cut 8 Fabric 5



As drawn, templates should be placed on the right side of the fabric. After printing, check to make sure that the following line is two inches long.



© Jinny Beyer, 2005



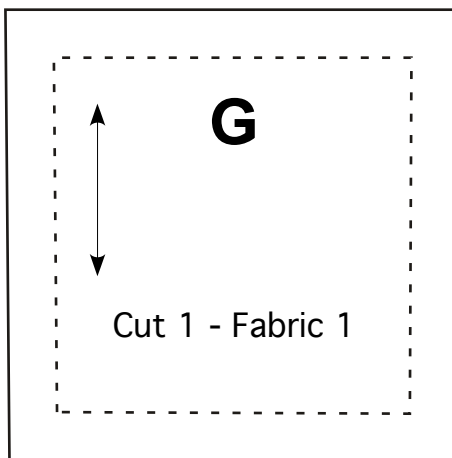
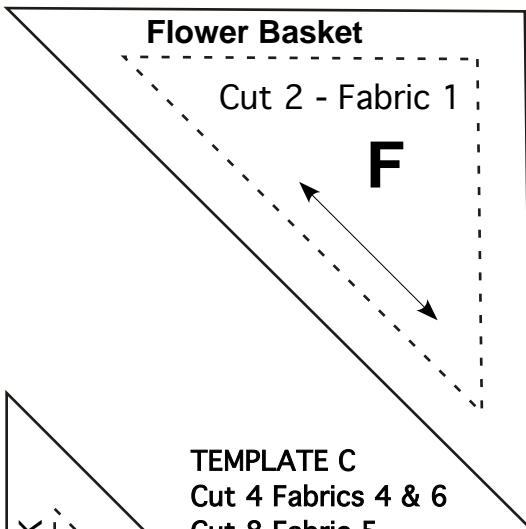
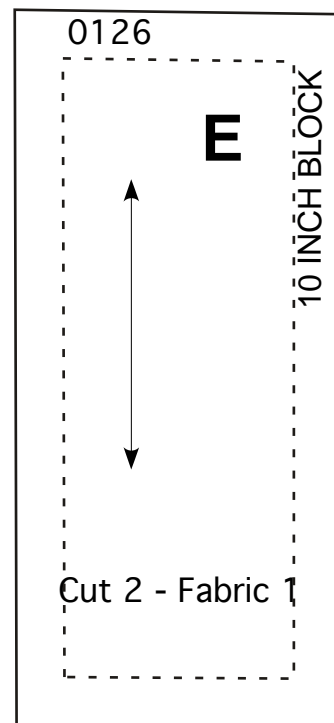
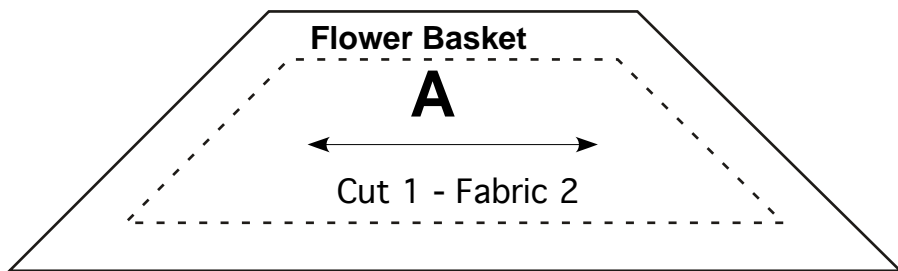
JINNY BEYER STUDIO 776 Walker Rd. GREAT FALLS, VA 22066

703-759-0250 FAX 703-759-0739 TOLL FREE: 866-760-7373

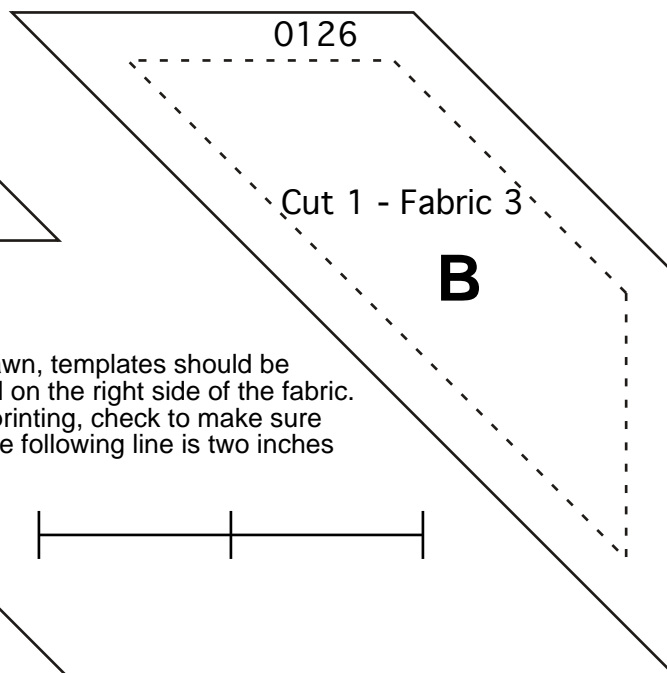
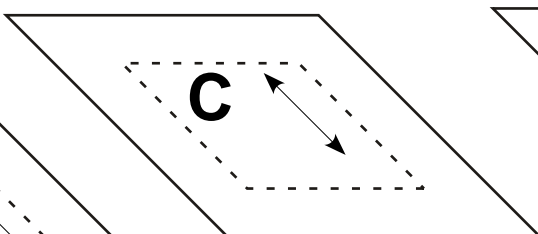
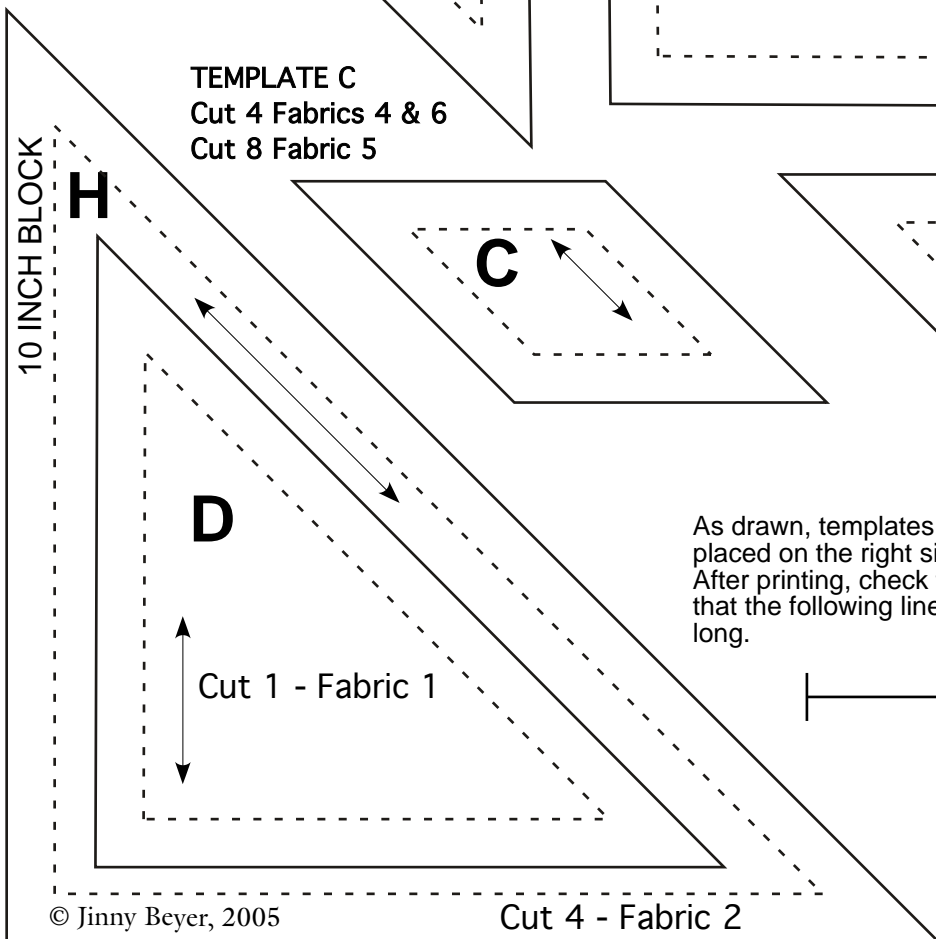
www.jinnybeyer.com

Flower Basket

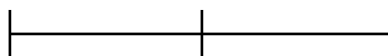
A **BLOCKaWEEK** pattern from jinnybeyer.com



TEMPLATE C
Cut 4 Fabrics 4 & 6
Cut 8 Fabric 5



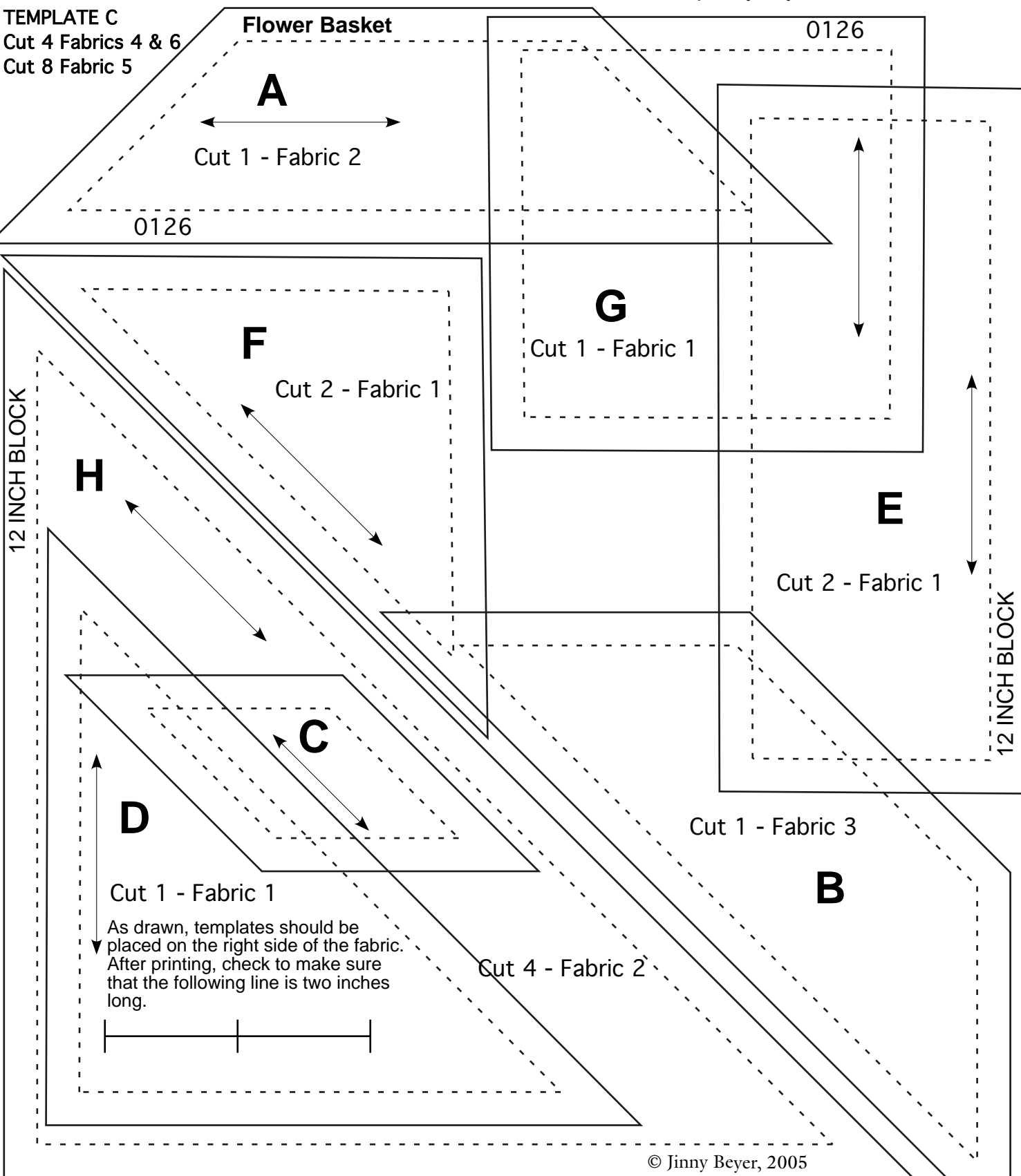
As drawn, templates should be placed on the right side of the fabric. After printing, check to make sure that the following line is two inches long.



Flower Basket

A **BLOCKaWEEK** pattern from jinnybeyer.com

TEMPLATE C
Cut 4 Fabrics 4 & 6
Cut 8 Fabric 5



As drawn, templates should be placed on the right side of the fabric.
After printing, check to make sure that the following line is two inches long.

