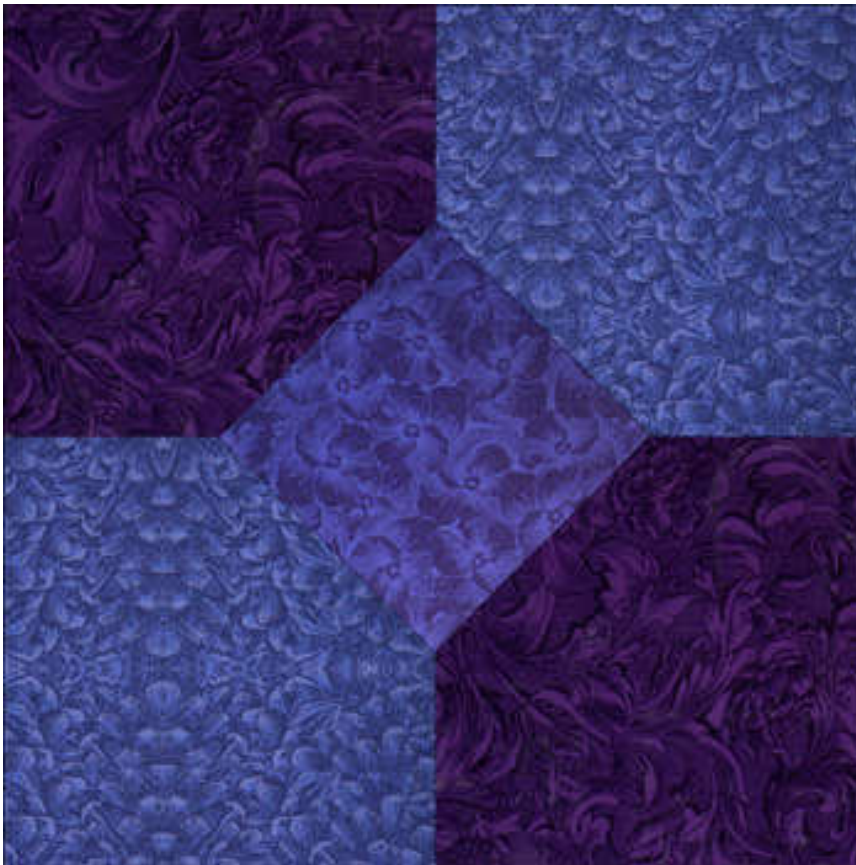
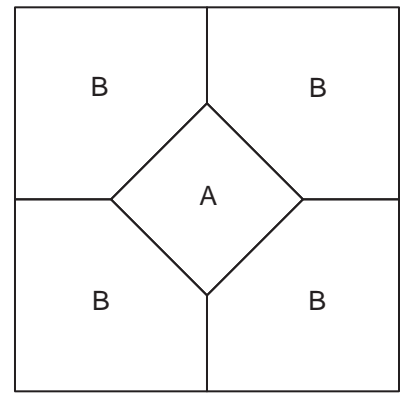


NECKTIE

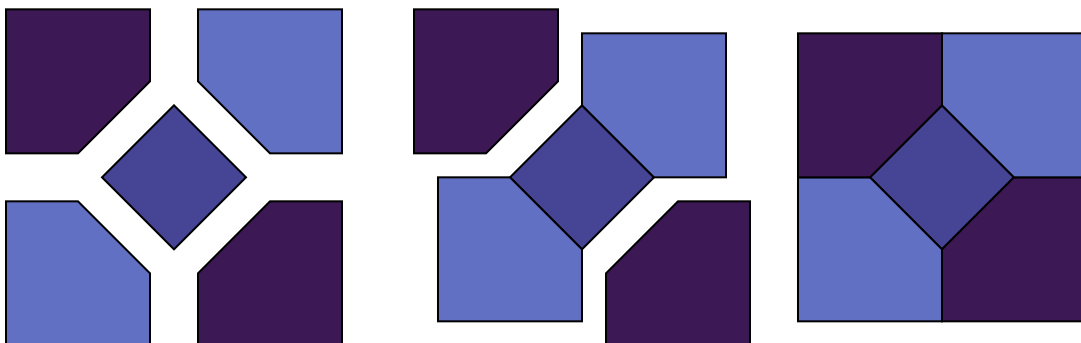
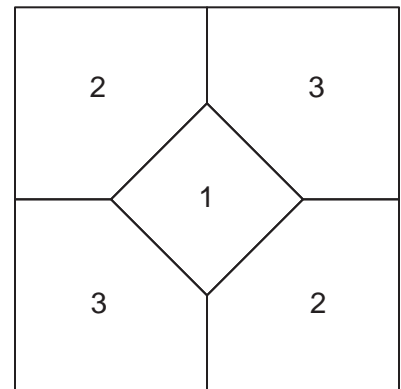


Ladies' Art Company Catalog, 1898

Template Guide



Fabric Placement

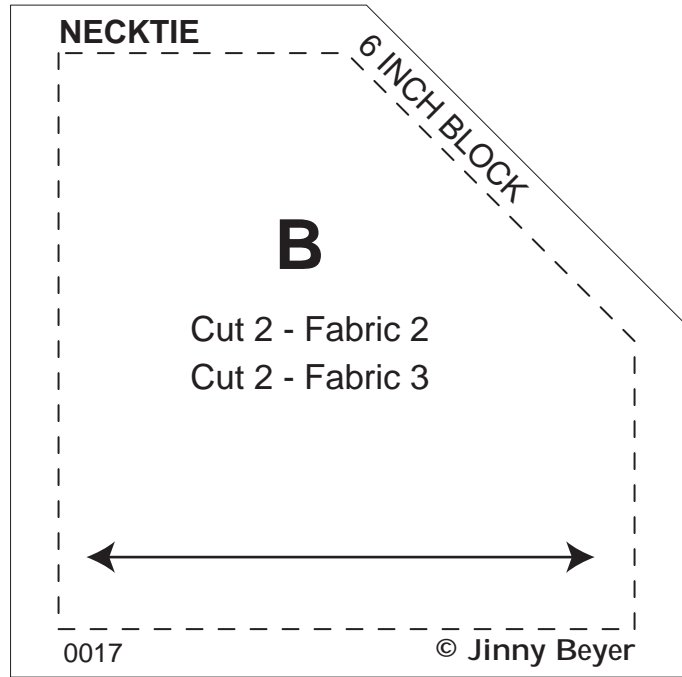
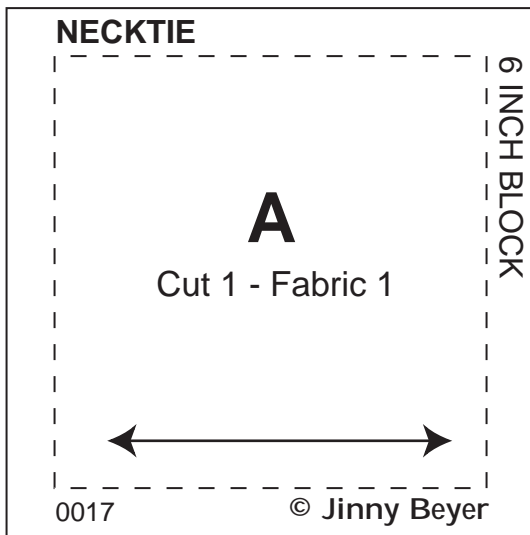


The fabrics used in this block are from the Jinny Beyer Palette Fabric Collection and other Jinny Beyer prints. Exact duplication of the block will depend on the availability of the prints. The design of the pattern shown here is a 10" block. Different fabric placement will occur when making the block in one of the other two sizes.



NECKTIE

Templates - 6" BLOCK

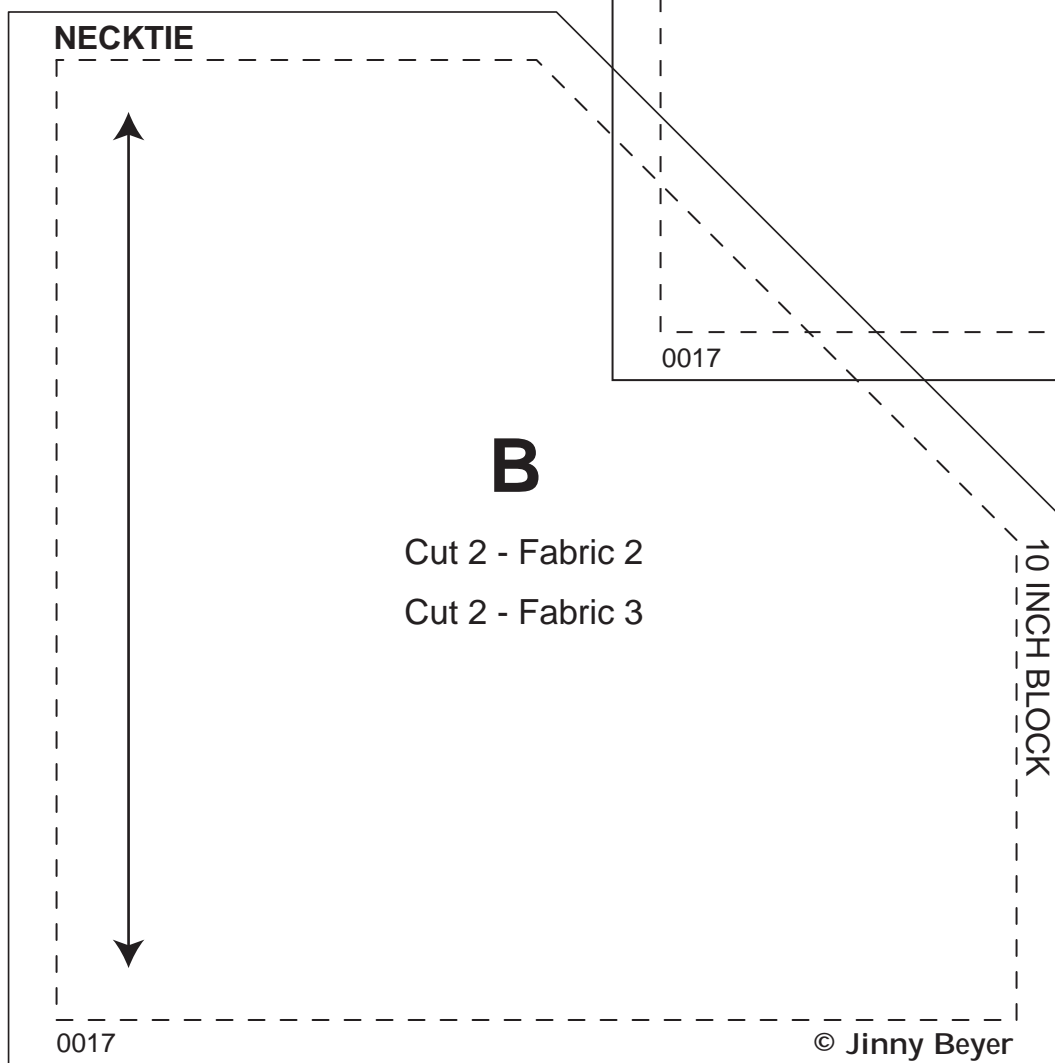
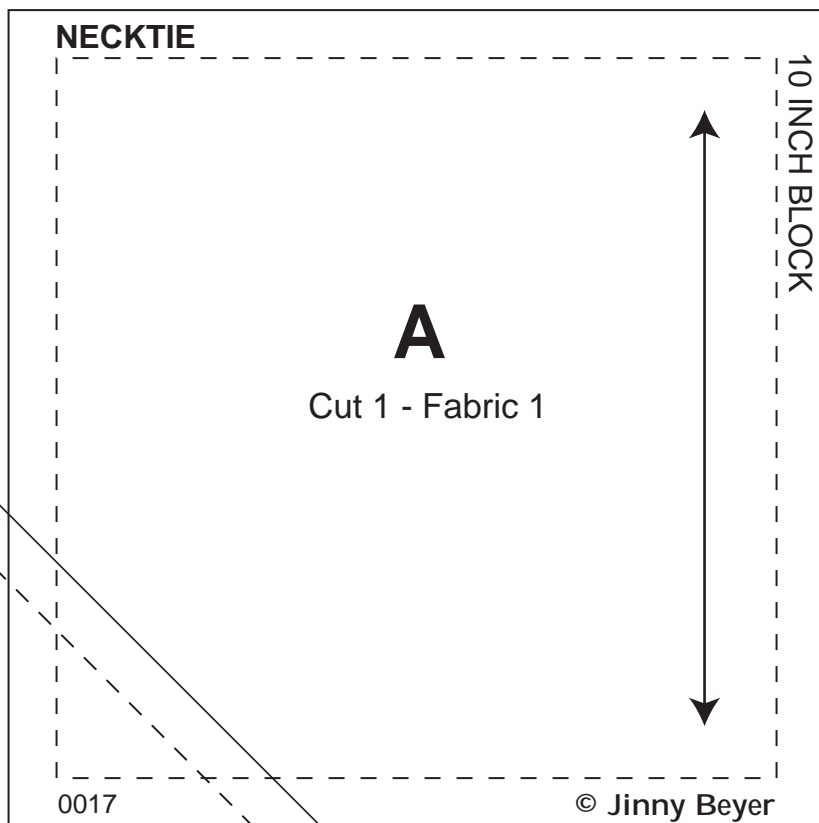


As drawn, templates should be placed on the right side of the fabric. After printing, check to make sure that the following line is two inches long.



NECKTIE

Templates - 10" BLOCK

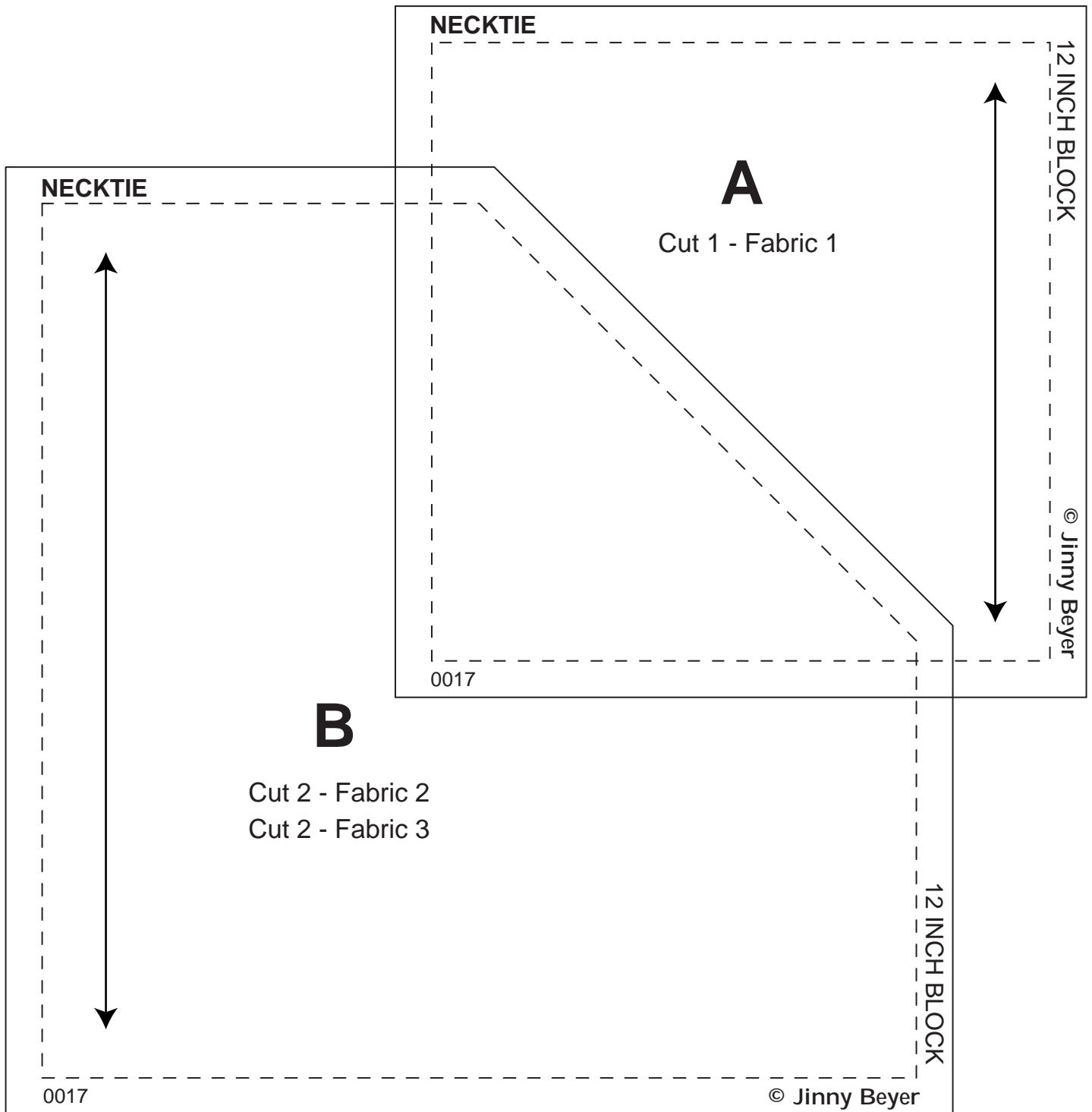


As drawn, templates should be placed on the right side of the fabric. After printing, check to make sure that the following line is two inches long.



NECKTIE

Templates - 12" BLOCK



As drawn, templates should be placed on the right side of the fabric. After printing, check to make sure that the following line is two inches long.

