

---

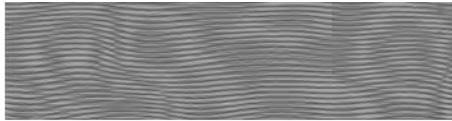
# Month 1

## Step 1: Make the Templates

Follow the General Instructions and those on the Template Page to make Templates A-N. The foundations are used in a future month; if you wish to sew the foundation sections by hand, you need to make Templates O, P and Q/Qr on page 13. Please note that Template K/Kr is not a full-sized template; it is used for cutting angles and marking dots. Detailed instructions for using it to make the K/Kr pieces are provided in the pattern.

## Step 2: Cut Fabrics 3 & 4

For most colorways, these fabrics are directional prints. For this reason, the fabric is cut specifically as follows. When cut as directed the moiré fabric will be cut across the LOF (along the selvedge) and will look as illustrated below.



**Fabric 3.** Cut six strips measuring  $2\frac{1}{4}$ " x 18".

**Fabric 4.** Cut six strips measuring  $1\frac{1}{2}$ " x 18".

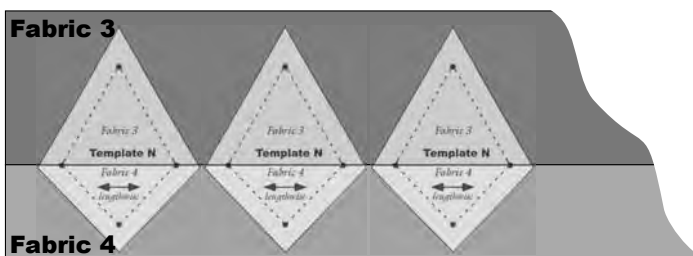
## Step 3: Make the N-Pieces

(If you are hand-piecing the project, use Template O to mark and cut 42 from Fabric 4 and use Template P to mark and cut 42 from Fabric 3. Then sew an O and a P together along the bases of the triangles to make the shape illustrated, right.)



Sew the Fabric 3 and Fabric 4 strips together into pairs along the long sides, making a total of six strip-sets. Press.

Place Template N on a strip-set, aligning the horizontal line on the template with the seam. Mark and cut a total of 42 patches.



*Note that for the Neutral colorway, Fabric 4 is darker than Fabric 3.*



### Video Lesson

Jinny demonstrates some of the techniques used this month at:  
[www.jinnybeycer.com/info-stellaris2019](http://www.jinnybeycer.com/info-stellaris2019)