

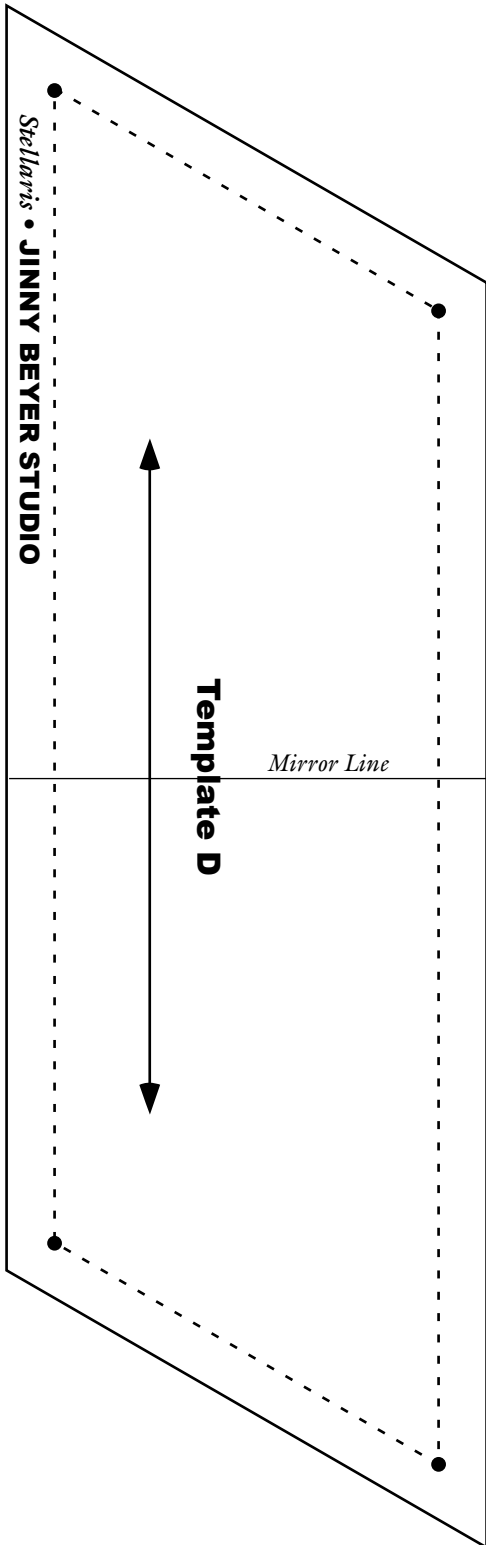
Templates

For each template, trace the pattern onto semi-transparent template plastic, transferring all the lines and markings. Cut the templates out on the solid lines.

Some template patterns are too large to fit on one piece of paper. Make copies then cut them out, butting and taping them together on the dashed Match Lines.

Punching a hole at each dot in the templates makes it easy to mark the seam intersections on the fabric patches (an essential step for a successful project.)

Template E has a **PIN** notation; the pattern instructs you to place pins on this side of these cut patches to assist in proper orientation.

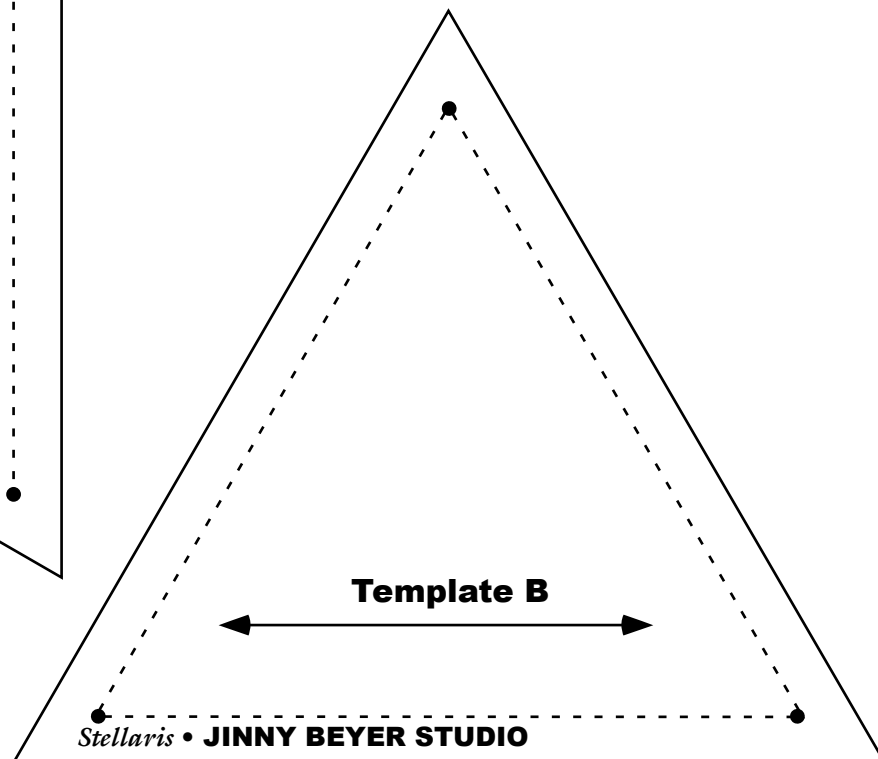


Printing Size Check

This box should measure 2 inches square.

If the box does not measure 2", your templates/foundations will not be the correct size.

If you are printing at home, be sure your printer is set to print at 100% with "no scaling".



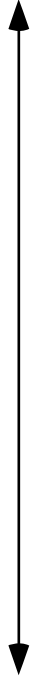
Stellaris • JINNY BEYER STUDIO

Used for cutting angle only; full strip should measure $33\frac{3}{8}$ " along bottom edge

Template K/Kr



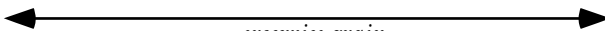
Template H



Stellaris • JINNY BEYER STUDIO

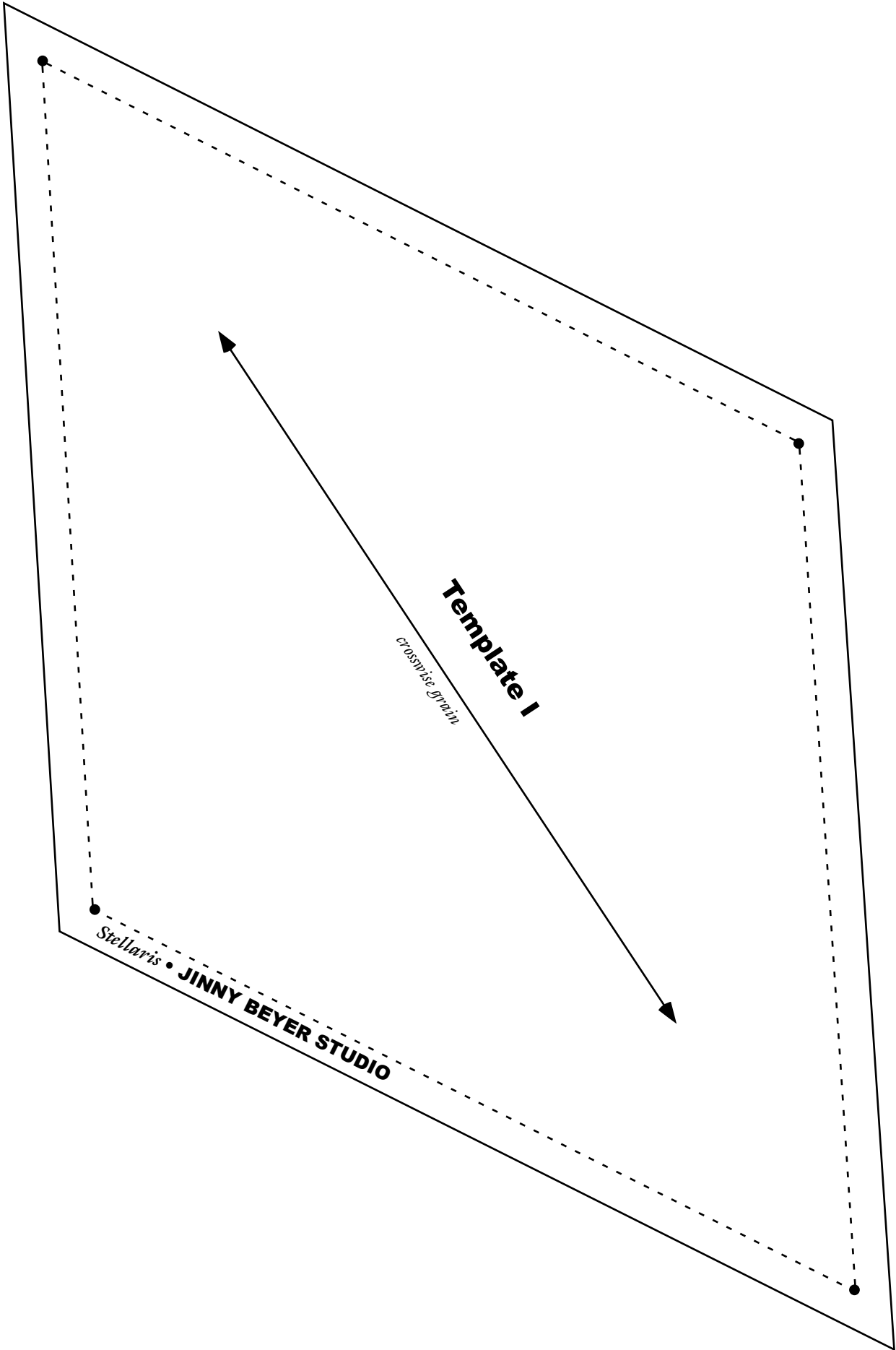
Template E

crosswise grain



Stellaris • JINNY BEYER STUDIO

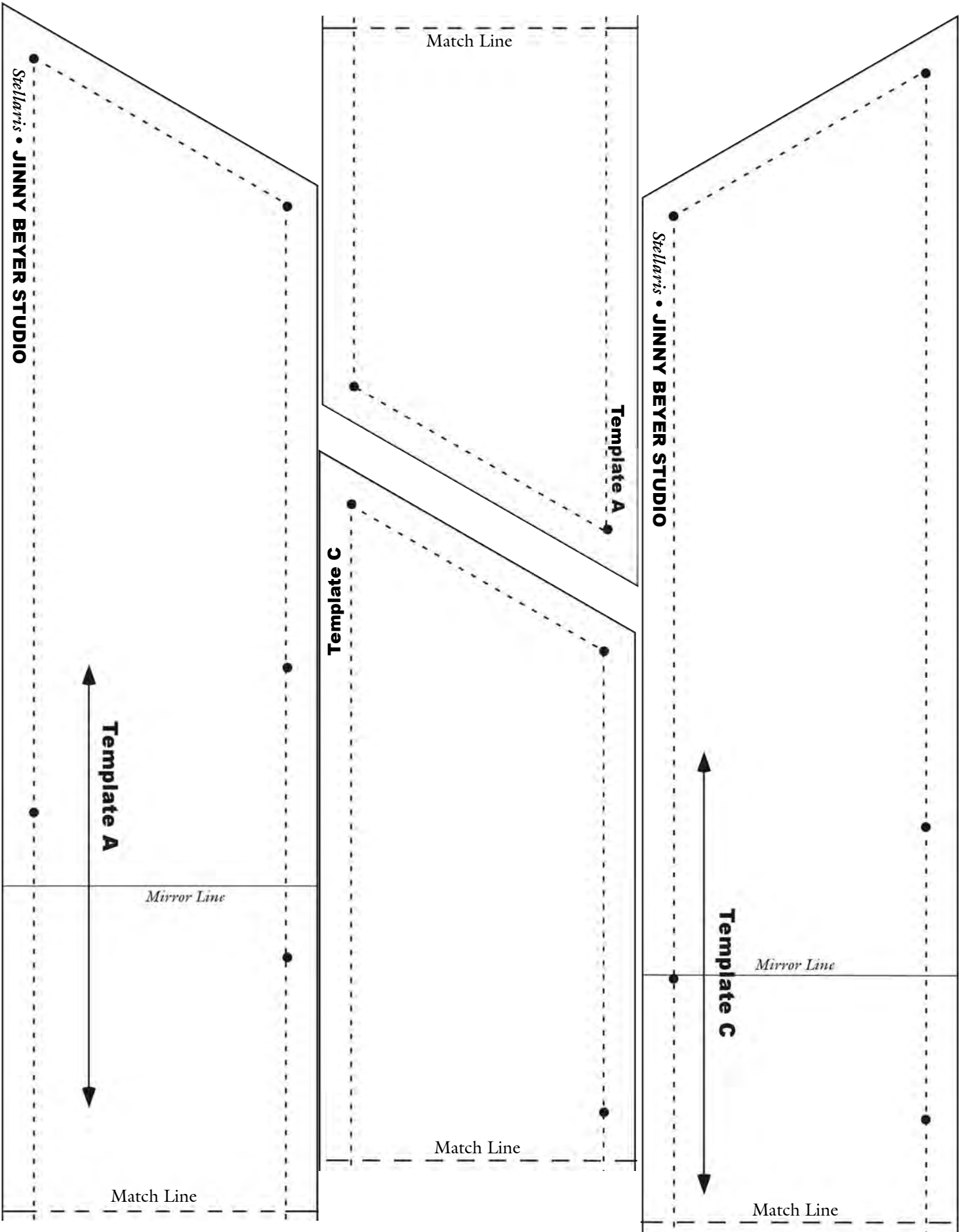
PIN

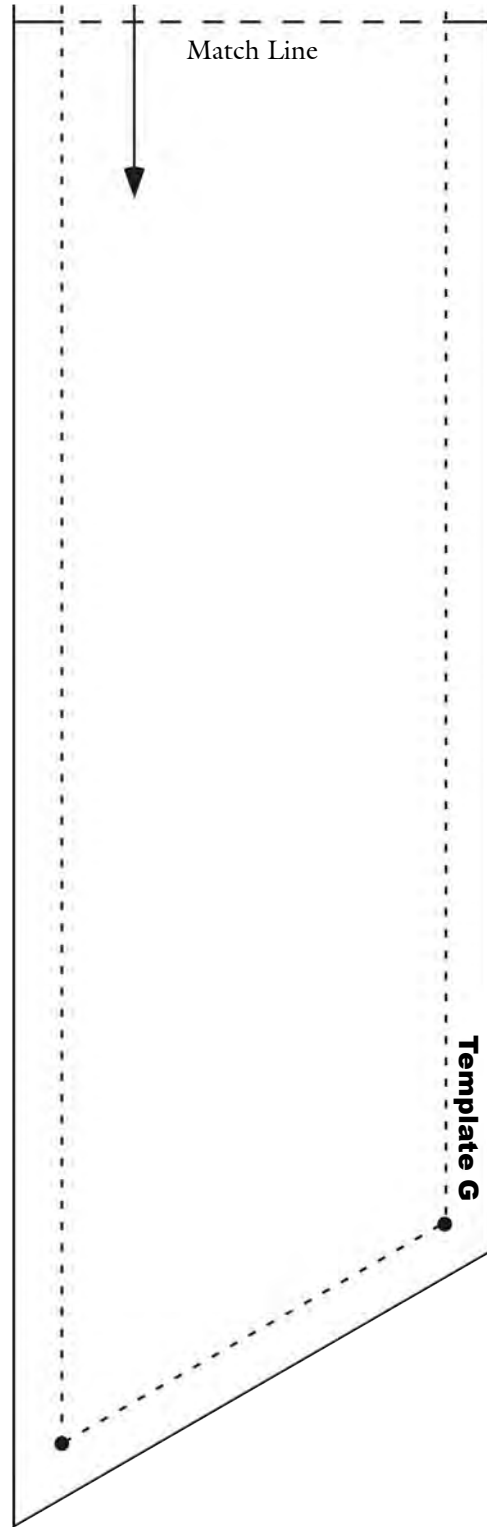
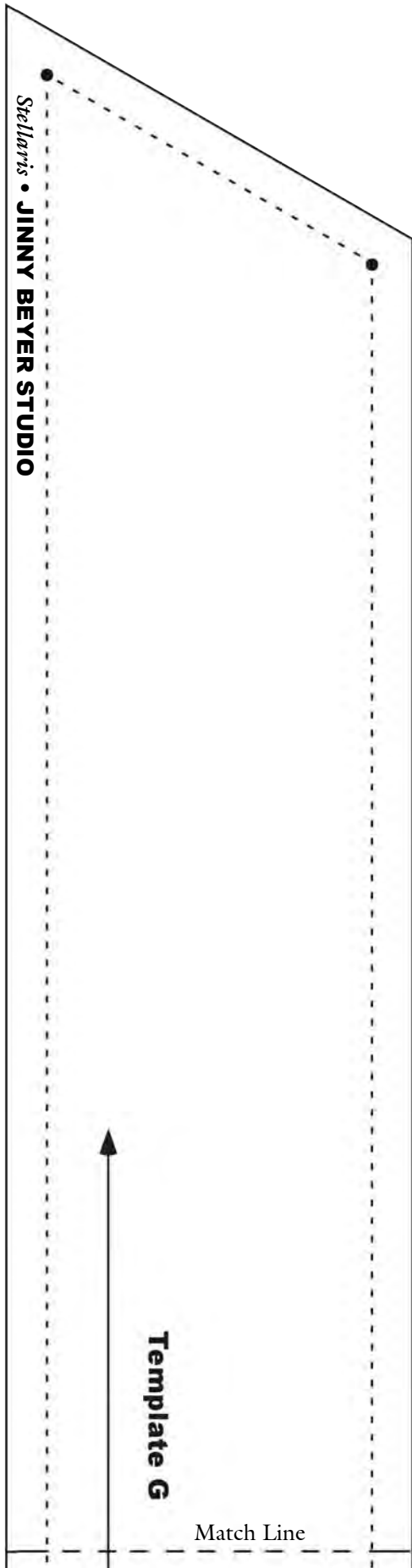


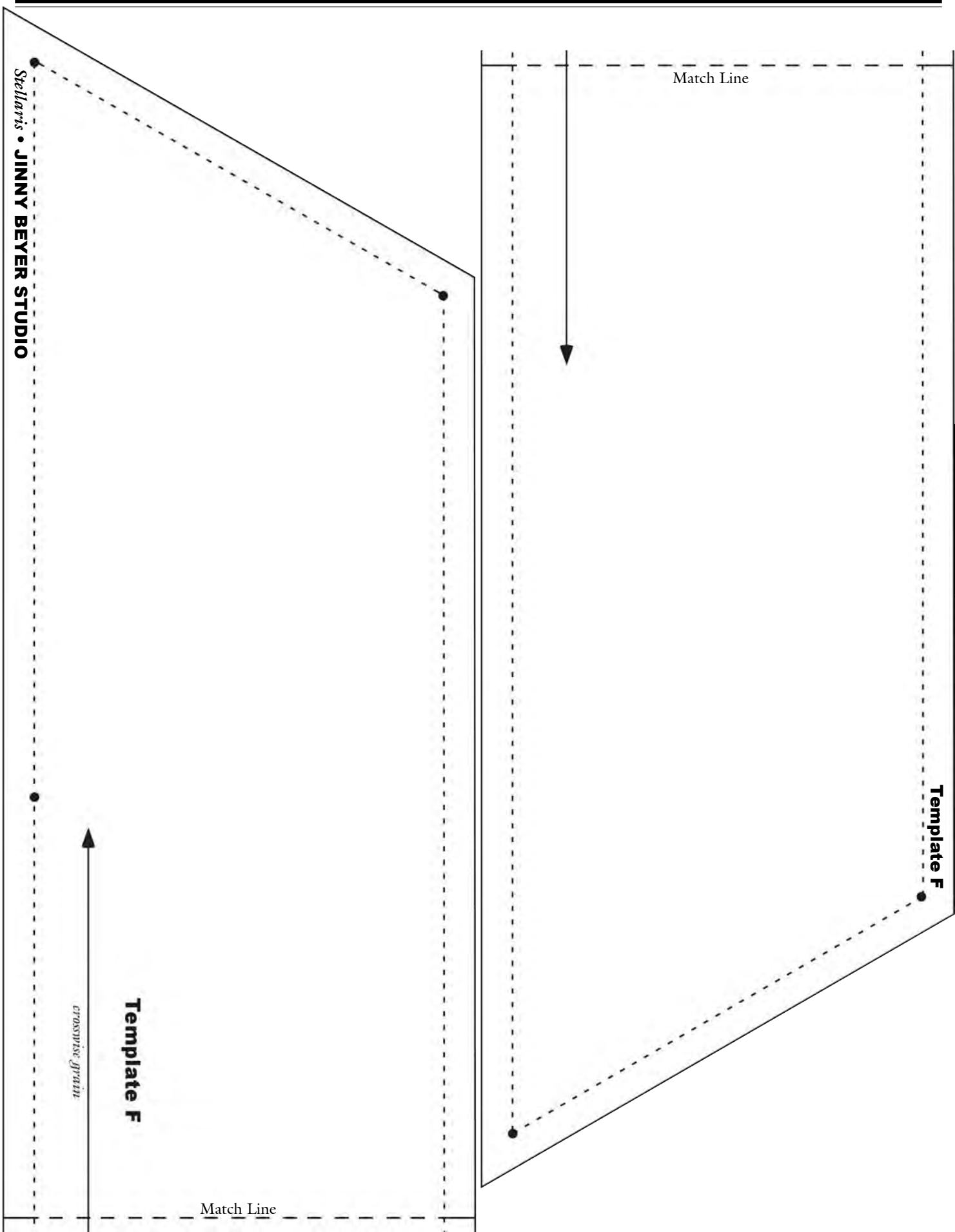
Template I

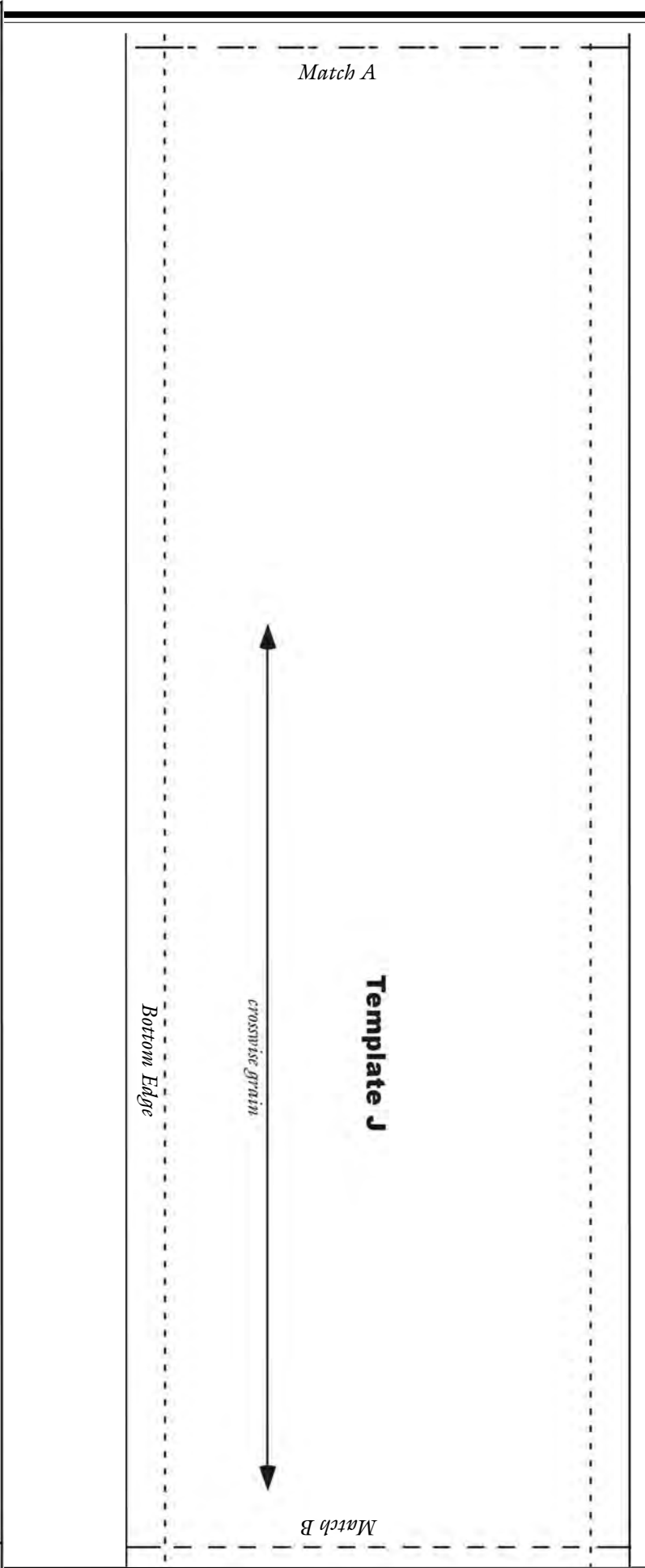
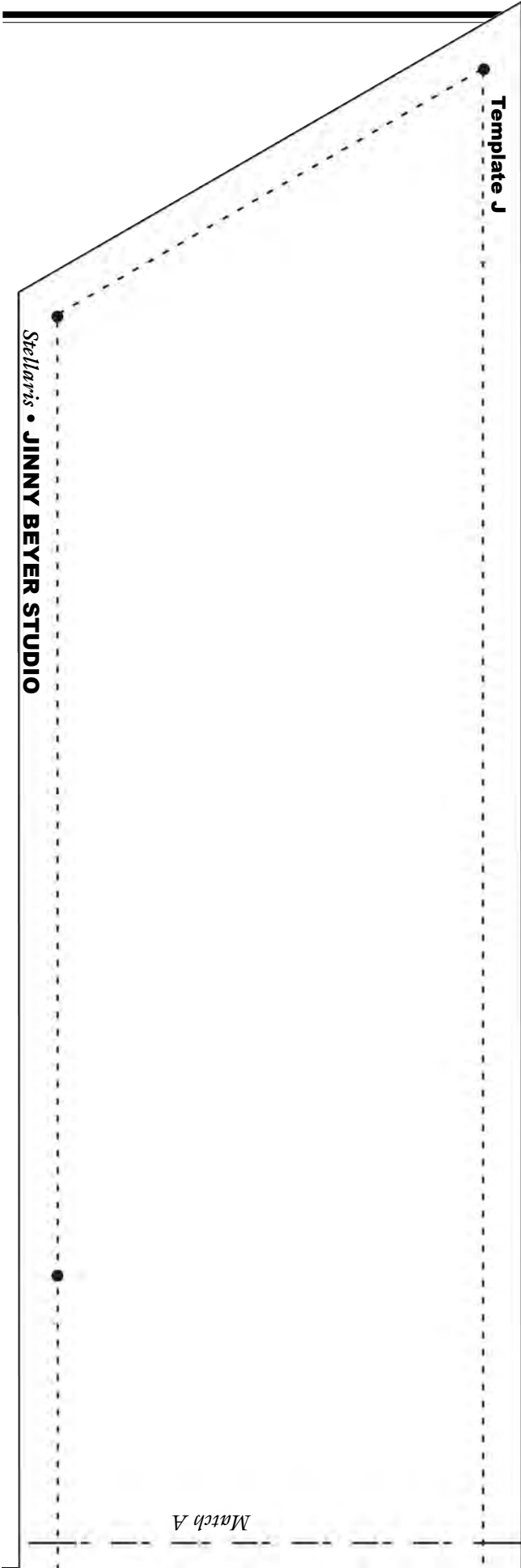
crosswise grain

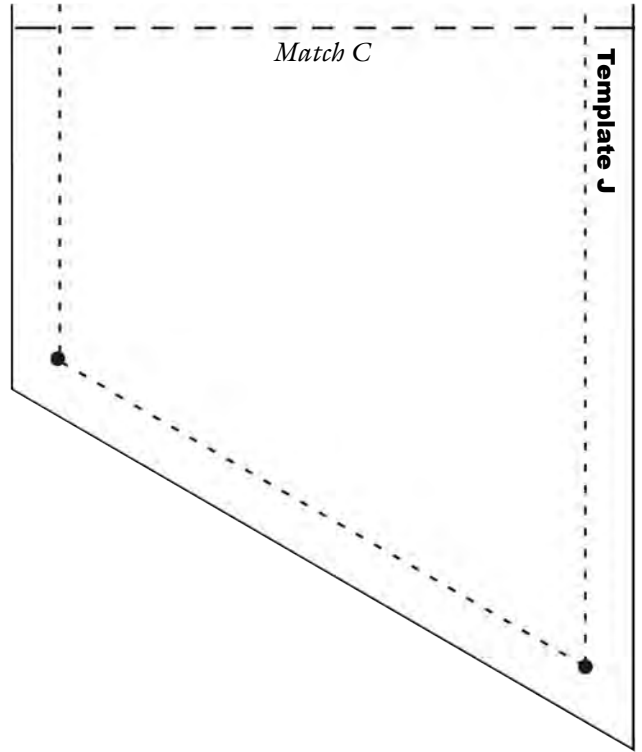
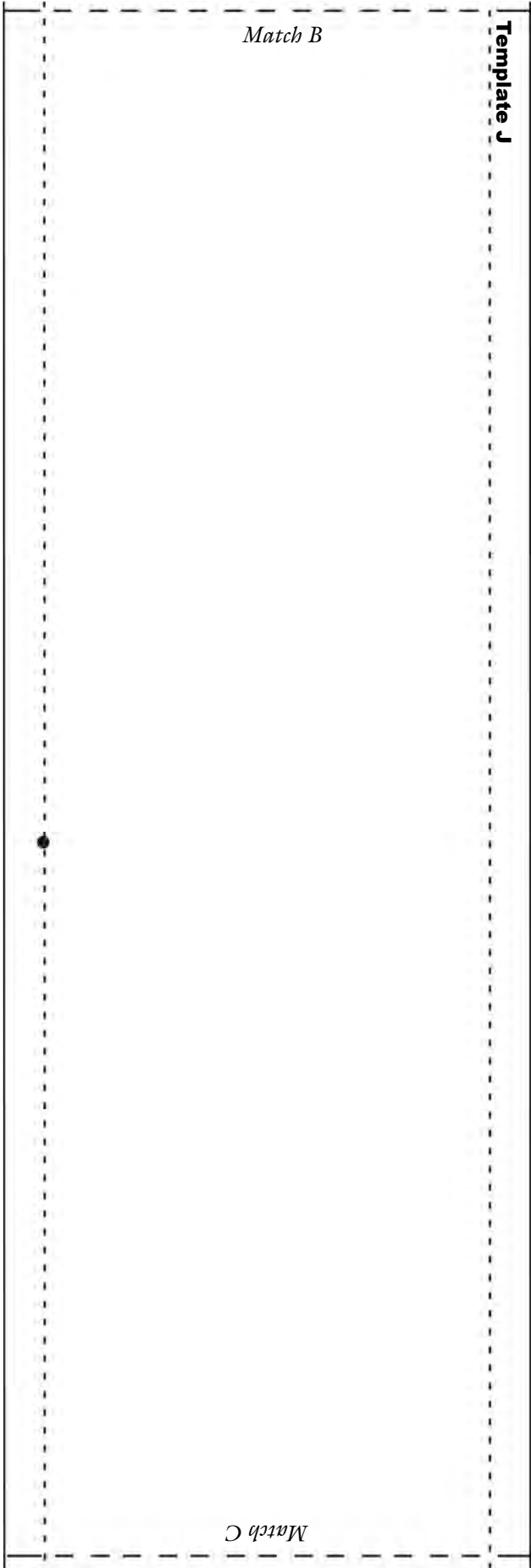
Stellaris • **JINNY BEYER STUDIO**



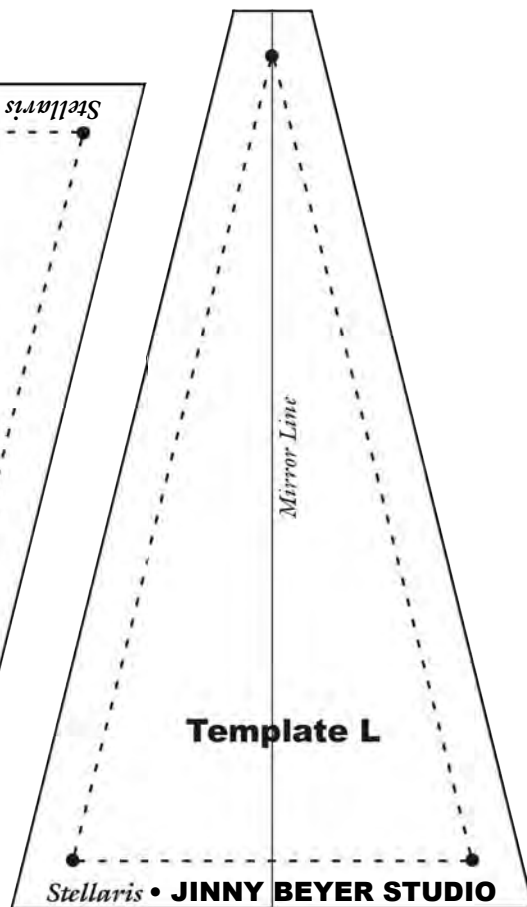
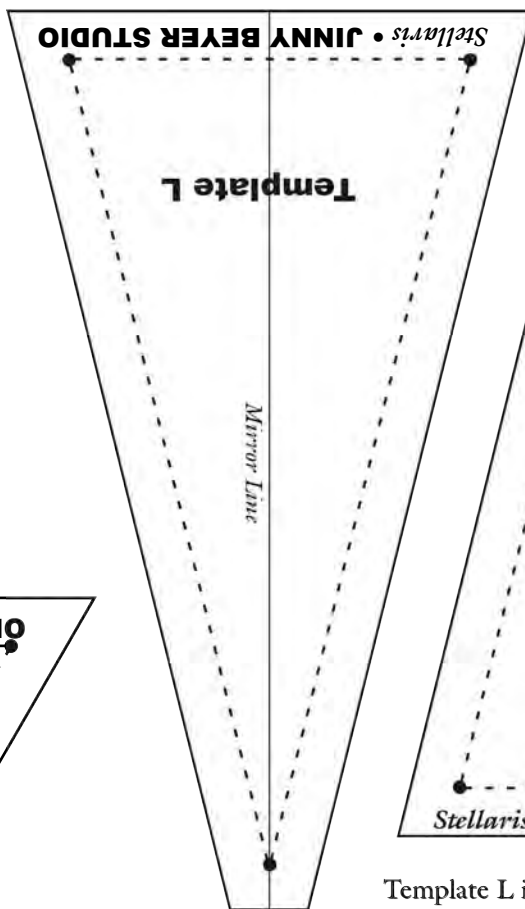
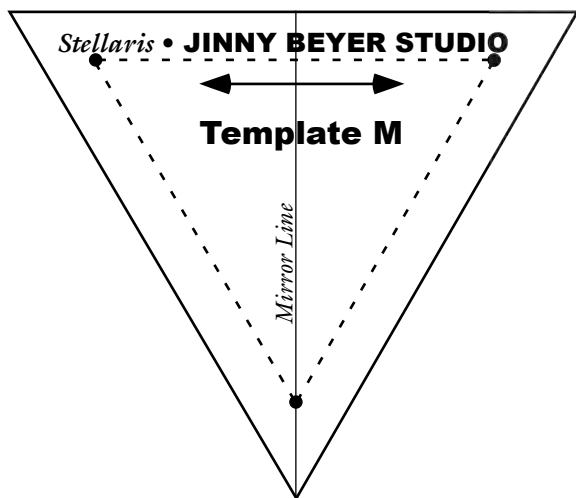
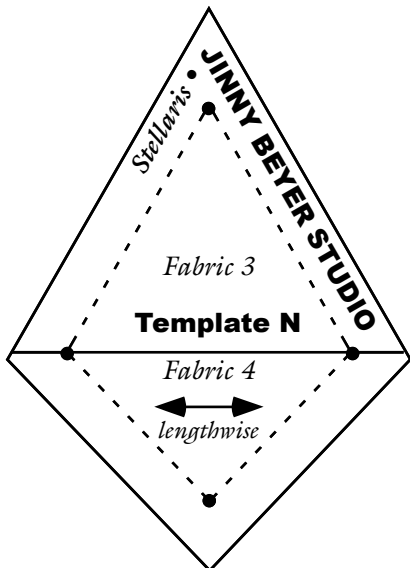






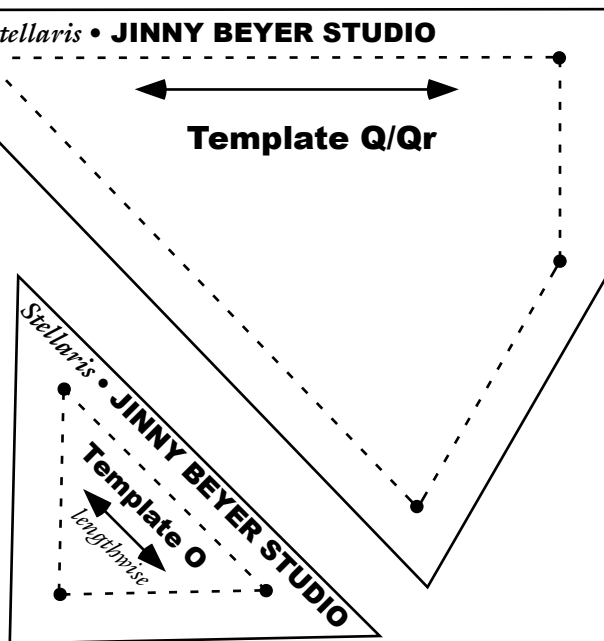
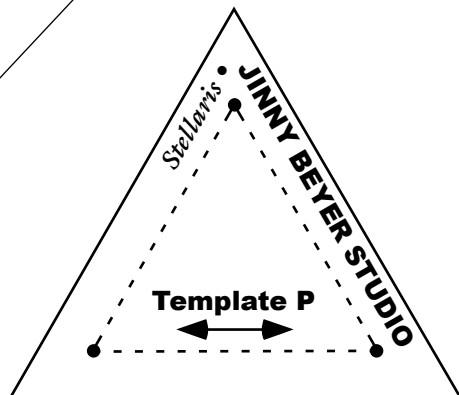
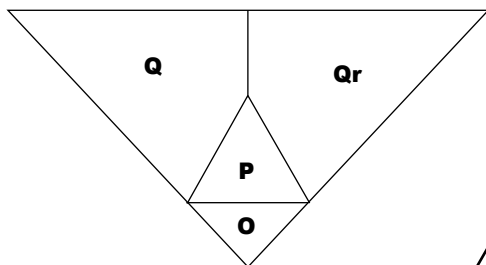


Templates for Compass Blocks



Template L is used to cut patches with multiple fabric designs. Because a portion of the fabric design is marked onto the template, Jinny recommends making two or three copies of the template (two copies are provided here).

Template O, P and Q/Qr are required only if not foundation piecing. In Step 3, instead of cutting strips and making a strip-set, cut 42 from Fabric 4 using Template O and 42 from Fabric 3 using Template P. Sew the pieces shown to make 42 units, 36 using Fabric 1 for Q/Qr and 6 using Fabric 2 for Q/Qr



Stellaris Template Placement

