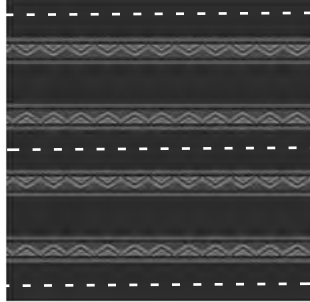

Month 4

The changes to this month's instructions relate to the slightly different design in Fabric 6. Follow the main pattern, making the changes noted here.

Step 2: Separate Fabric 6 Double-Stripes

Fabric 6 has 17 sets of double stripes across the WOF. Note the orientation of the peaks of the triangles.



Divide the stripes by cutting in the center of the black space after **every other stripe** as illustrated, ensuring that the peaks of the two lines of triangles face each other.



The 17 strips will each measure about 2½" wide and look like the image, left. The black along the outside will

measure about 3/8" wide so when the strips are sewn into the quilt with a ¼" seam allowance, a narrow line of black will still show.

Step 4: Cut the Remaining Fabric 6

Although the Fabric 6 in your kit has a different design than the one illustrated in the main pattern, the process for *Preparing Templates C, D, G and H* and cutting the pieces is the same.