

Month 4

Step 1: Cut Fabrics 1, 2 & 5

Cut the pieces for the following fabrics in the order listed, paying close attention to the grainline orientation. Transfer all seam intersection dots from the templates to the wrong sides of the fabric (not shown in all illustrations).

Fabric 1.

For J. Cut six strips measuring 3¼" x WOF. Use Template J to mark and cut one piece from each strip. Transfer all the dots from the template to the wrong side of the fabric.

For I. Use the template to cut six pieces with the grainline arrow running along the crosswise grain.

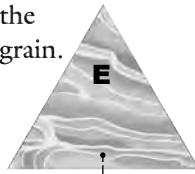


Fabric 2.

For E and F. Use Template F to mark and cut six pieces with the grainline arrow running along the crosswise fabric grain.

Next, use Template E to cut six pieces, with the grainline arrow running along the crosswise grain.

Place a pin at the base of triangle (under the grainline arrow position); this will help in rotating the piece correctly in a later step.



Fabric 5. Cut two rectangles measuring 14½" x 25". Place them **right sides together** and then cut once on the diagonal to make four triangles. Mark seam intersection dots on the wrong side of the fabric at all three angles.

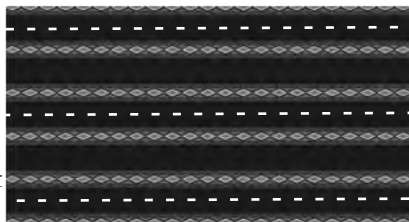
From the remaining fabric, use Template B to cut six triangles.

Step 2: Separate Fabric 6 Double-Stripes

Desert & Plum Colorways. Refer to the Pattern Notes for alternate instructions.

All Other Colorways.

Fabric 6 has 17 sets of double stripes across the WOF. There is also one stripe printed very near one of the selvages that is not usable because of where it is printed. Remove this stripe before cutting the double stripes as follows.



Divide the stripes by cutting in the center of the black space after **every other stripe** as illustrated above.



The 17 strips (used in Steps 3 and 4) will each measure about 2½" wide and look like the image, left. The black along the outside will measure about 3/8" wide so when the strips are sewn into the quilt with a ¼" seam allowance, a narrow line of black will still show.

Step 3: Cut Fabric 6 for Borders 1 & 3

Cut the following from the strips as described; doing so ensures that there will be sufficient length in strips to cut the pieces required in Step 4.

Strips 1 & 2. From each strip, cut one piece measuring 62" for Border 1.

Strips 3 & 4. From each strip, cut two pieces measuring 36" for Border 1.

Strips 5 & 6. From each strip, cut two pieces measuring 41" for Border 3.

Strips 7 & 8. From each strip, cut one piece measuring 73" for Border 3.

Step 4: Cut the Remaining Fabric 6

In the quilt, many of the Fabric 6 pieces meet at corners; to ensure that the designs will match, it is important to prepare the templates in a particular way. To do so, follow the instructions for *Preparing Templates C, D, G and H* on Page 22.

Cut the strips into pieces as follows. After cutting, transfer **all** the dots from the templates to the wrong side of the fabric patches.

To cut identical patches, place the marked template on the fabric, matching the template markings to the fabric design.

Stripe 9 & 10. From the two strips, cut a total of four pieces measuring 36" each. These will be used for the K/Kr pieces and trimmed in Step 6.

Strips 11 & 13. From the three strips, cut a total of 12 identical pieces using Template C.

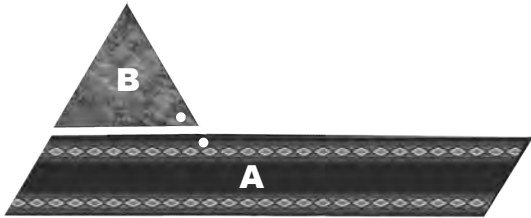
Stripe 14 & 15. From the two strips, cut a total of six identical pieces using Template G.

Stripe 16 & 17. From the two strips, cut a total of 12 identical pieces using Template D, placing the mirror line in the center of a mirror-image motif.

Leftover Strips. From the remaining mini-stripe strips, use Template A to mark and cut six identical pieces (placing the mirror line between two diamonds), and Template H to mark and cut six identical pieces.

Step 5: Make A/B Unit for Center Compass

Match a B to an A at the dots, pinning in place. Sew the pieces together, stopping the stitching at the dot shown. Repeat to make six.



Step 6: Make the Corners

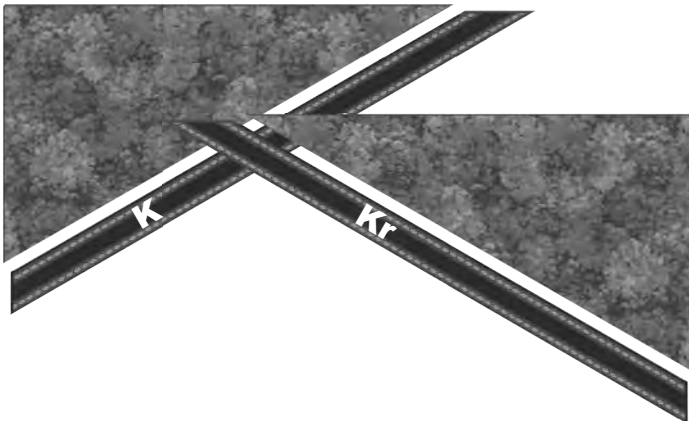
a) *Trim K/Kr pieces.* Using one 36" Fabric 6 strip reserved for Template K, place the template near the left edge of the strip. Mark and cut the left angle. Next measure $33\frac{3}{8}$ " from the bottom edge of the cut strip and mark that spot on the fabric. Place the right-end point of the template at that spot; mark the angle. Using this strip as a pattern, cut a second identical piece.

Next to make a reversed piece (Kr), place one of the cut pieces RST with an uncut strip, matching the fabric designs on both ends. Mark and cut the angles. Use this just-cut strip as a pattern to cut a second identical Kr piece.

Transfer the dots from the template to the four pieces.

b) *Complete the Corner Pieces.* Matching the dots and easing in any fullness, pin then sew the K and Kr strips to the Fabric 5 triangles (cut in Step 1) as illustrated below.

Note that the sharply angled edge of the K/Kr pieces is susceptible to stretching. Consider starching that end or sewing a line of stay-stitching about $1/8$ " in from the edge.

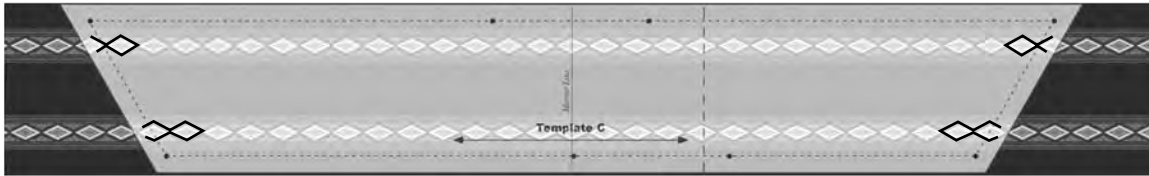


Video Lesson

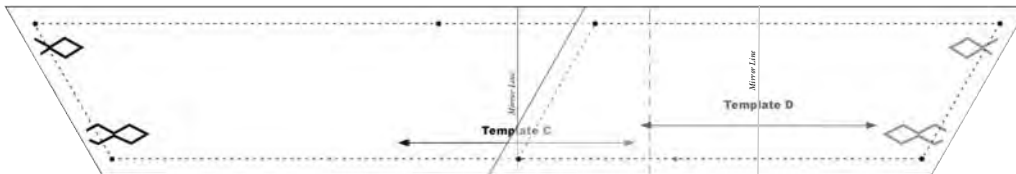
Jinny demonstrates some of the techniques used this month at:
www.jinnybeyer.com/info-stellaris2019

Preparing Templates C, D, G and H

Place Template C on one of the Fabric 6 stripes, aligning the Mirror Line in the center of one of the design motifs. Mark a portion of the design onto both the left and right sides of the template. (Because the template is centered on the design, the motifs on either side will be identical although mirrored.)

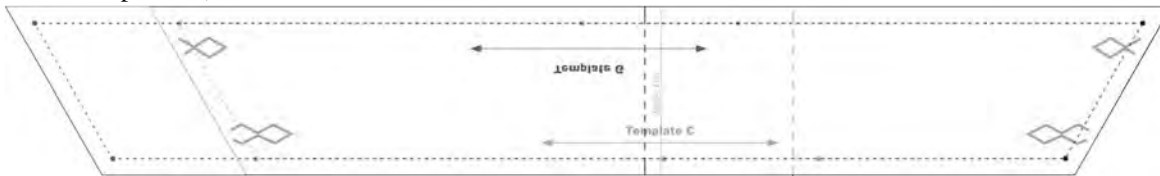


Next, place Template D on top of Template C, aligning the right edges. Copy the markings onto Template D, then remove it.



Copy these markings onto Template D.

Next, flip Template G so it is upside down and place it over Template C as shown, aligning the right edges. Copy the markings onto Template G, then remove it.



Copy these markings onto Template G. You will be marking on the wrong side of the template.

Next, place Template G on a mini-stripe, aligning the markings on the right side of the template with the fabric. Mark the design motifs from the fabric onto the left side of the template.



Lastly, flip Template H over and place it over Template G as shown, aligning the left edges. Copy the markings onto Template H, then remove it.

Copy these markings onto Template H. You will be marking on the wrong side of the template.

