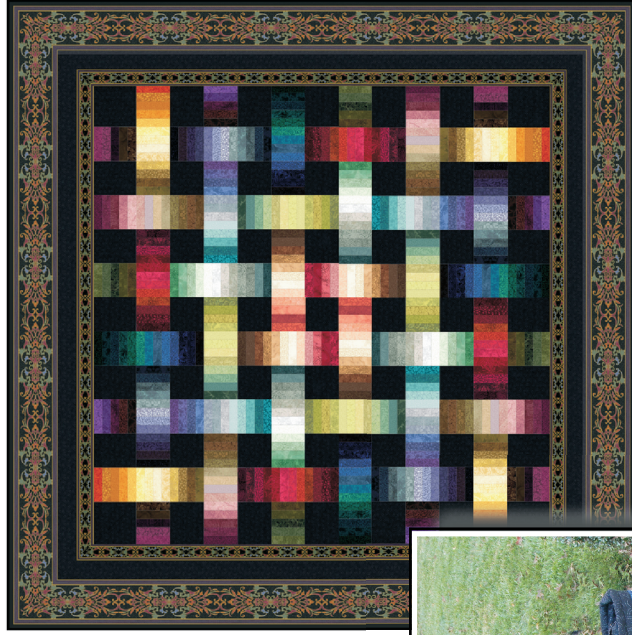


Woven Ribbons
58" x 58"



*See more projects
featuring the
Jinny Beyer Palette Collection
at jinnybeyer.com*

Quilter's Palette Tote

Braided Palette Charm Requirements

- 1 packet of pre-cut Palette Collection 5" Charm Squares
- 2 yards of border print fabric
- 5/8 yard of background fabric
- 3/8 yard binding fabric

1½ yards of backing required (not included)

*Pattern may not be reproduced or distributed by mechanical or electronic means
without express written permission of the copyright holder.*

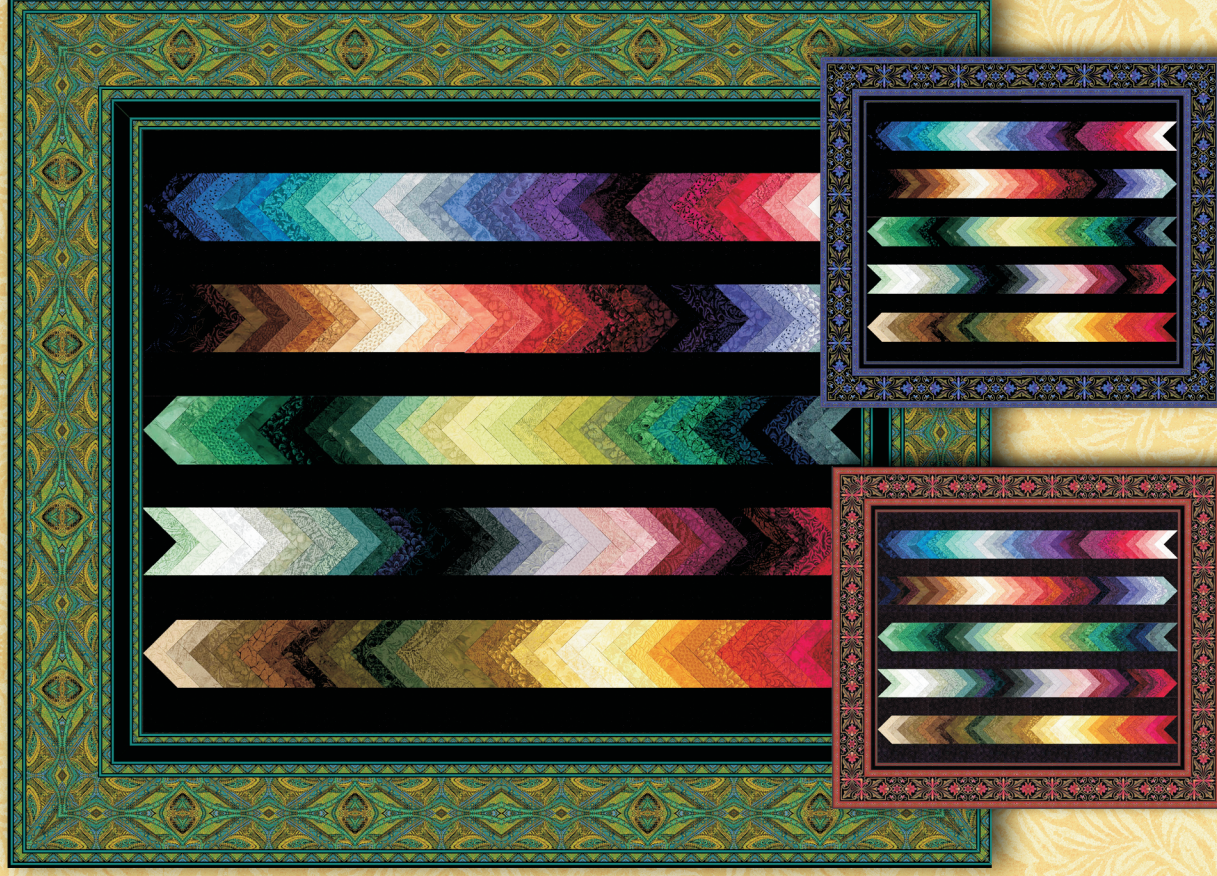


JINNY BEYER STUDIO
776F Walker Road • Great Falls, VA 22066
www.jinnybeyer.com • 866.759.7373

©2009, 2015 Jinny Beyer
Pattern Written by Elaine Kelly
BPC-11.2015



JINNY BEYER STUDIO
Quilt Patterns



Braided Palette Charm

This charming quilt features all the fabrics from Jinny Beyer's 150-piece Palette fabric collection. The braids shade beautifully from one color to the next and are quick to sew. The border incorporates portions from both the wide and narrow stripes from the border print fabric, giving the look of a multi-piece border with just one cut.

Read the entire pattern before beginning. All seam allowances are $\frac{1}{4}$ ". **Do not disturb the order of the pre-cut colored squares!** They are used in order. The top fabric is Fabric 1. Basic quilting knowledge assumed.

Step 1: Cut Background Pieces

From the background fabric, cut the following in order:

- 6 strips measuring $2\frac{1}{2}$ " x 34"
- 3 squares measuring $3\frac{1}{4}$ "; then cut in half once along the diagonal to create six C-triangles. (Only five will be used.)
- 5 squares measuring $2\frac{7}{8}$ "; then cut in half once along the diagonal to create 10 D-triangles.

Be sure to mark your C and D triangles and keep them separate as they are very similar in size.

Step 2: Organize & Trim Braid Strip Fabrics

Each braid strip uses an A-patch and a B-patch in thirty different fabrics. Some organization before sewing will make your sewing progress smoothly.

From each fabric in the charm square set -- **and without disturbing the order** -- cut one strip measuring $1\frac{1}{4}$ " x 3" (A patches) and a second strip measuring $1\frac{1}{4}$ " x $3\frac{1}{2}$ " (B patches).*

Divide the A patches and the B patches into five sets of thirty fabrics. Label the sets 1-5. Set 1 will be used for Braid Strip 1; Set 2 will be used for Braid Strip 2 and so on.

You will always begin with the highest number fabric in your set, so turn each whole set wrong side up. This means that in Set 1, the fabric on top is #30 -- the first one you need to sew to your C-triangle!

Step 3: Sew Braid Strips

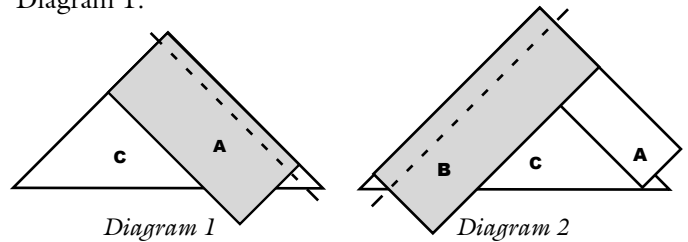
Note: Your braid strips will be trimmed to fit after they are constructed.

*Free Bonus Quilt Pattern

Save the fabric left from the Palette charm squares to make the flying geese in Jinny's Snowbirds quilt. (It uses $2\frac{1}{4}$ " x $2\frac{3}{4}$ " rectangles.)

For the free pattern, visit
www.jinnybeyer.com/promos/snowbirds

For each braid strip, start with a C triangle as your base. (All seam allowances are pressed towards the strip after sewing each seam.) Sew the first A strip to the right side as in Diagram 1.



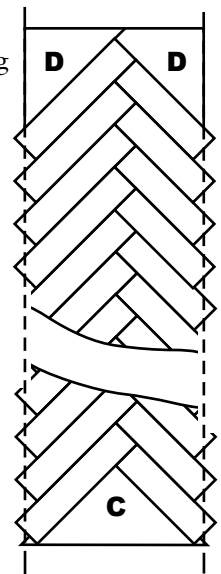
Press the strip right side out and then add the matching B strip as in Diagram 2. Be sure to align the top edge of the new strip with the outside edge of the unit you just constructed. Sew and press. Repeat until all thirty fabrics have been sewn onto the strip.

Sew a D-triangle to each side of last fabric in the braid strip.

Complete the five braid strips in this fashion.

Step 4: Trim Braid Strips

To trim the edges of the braid strips, **line up the edge** of your rotary cutting ruler with the outside edge of the D-triangle, and **align the $\frac{1}{4}$ -inch line** on your ruler with the V-points made by your strips and cut. (See Diagram 3.) Small V-points will remain.



Step 5: Assemble Quilt Top.

Add a background strip to each side of Strips 1, 3, and 5, aligning top and bottom ends and easing in fullness as necessary. Sew with the braided strip on top, taking care to **ensure that the seam remains just inside the V-points.**

Following the *Quilt Assembly Diagram* on *Diagram 3* page 2, sew Strip 2 between Strips 1 and 3, and Strip 4 between Strips 3 and 5. Be sure to turn Strips 2 and 4 so that the braids run in the opposite direction as the other strips.

Step 6: Borders & Binding

From the border print, cut four strips from the length of fabric. To achieve the look of a triple-fabric border with just one piece of fabric, cut the border stripe as shown in *Diagram 4/5* below.

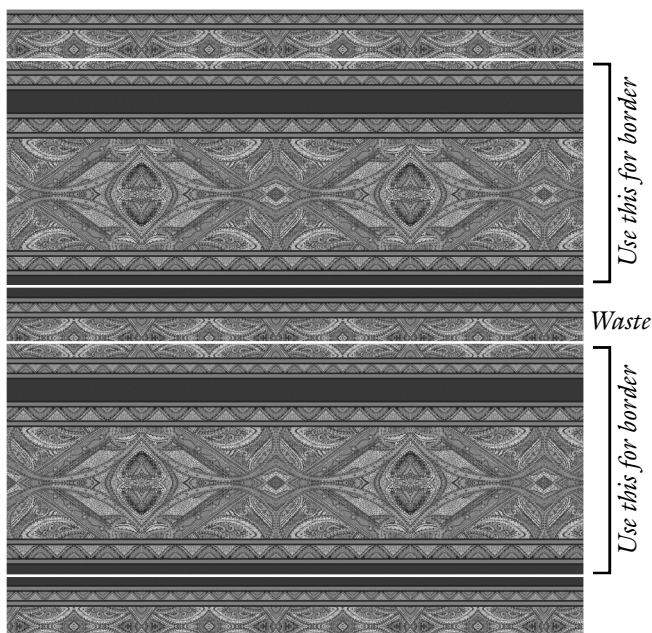


Diagram 4: For each border strip, include a wide stripe, the solid dark green stripe, and the edging of the narrow stripe plus $\frac{1}{4}$ " seam allowance on both long sides.

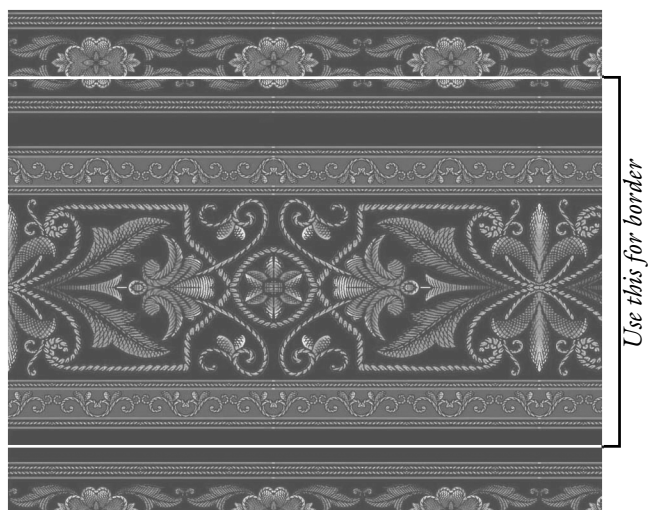
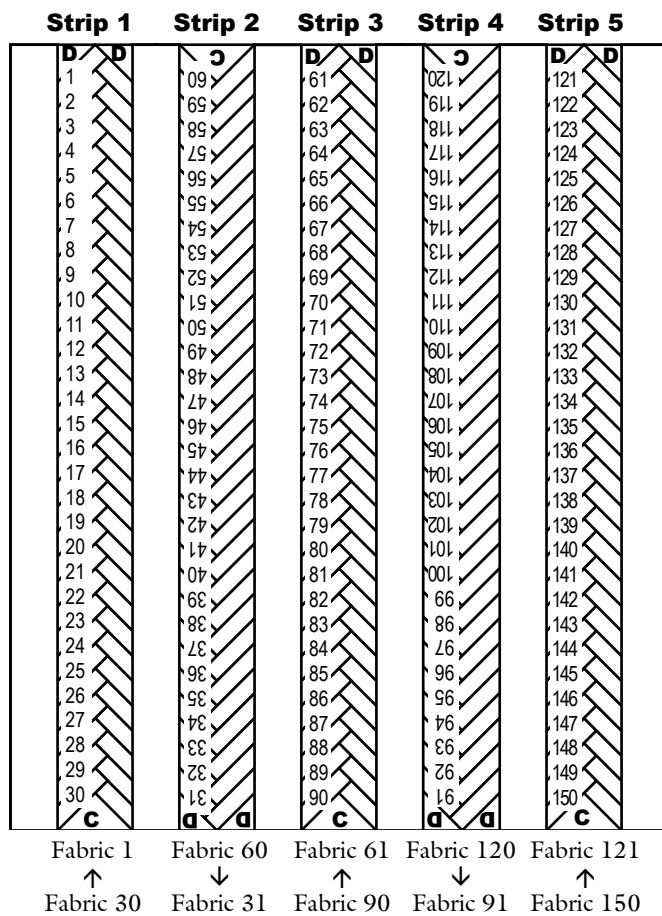


Diagram 5, Sophia Border: Includes a wide stripe, the solid black stripe, and the outside-most portion of the narrow stripe, plus $\frac{1}{4}$ " seam allowance on both long sides.



Quilt Assembly Diagram:

Begin sewing all strips from C-Triangles

Following the instructions for a **rectangular quilt** in *Adding Borders the Jinny Beyer Way*, attach the borders to the outside of the quilt, mitering the corners.

Layer the quilt as follows: backing (wrong side up), batting, quilt top (right side up). Baste the layers together and quilt as desired.

When the quilting is completed, trim backing and batting even with edges of quilt top. Cut strips up to $2\frac{1}{2}$ " wide from the binding fabric and bind using your favorite binding method or by following the instructions in www.jinnybeyer.com/promos/binding.

New to working with border print fabrics? Jinny has put together some videos to introduce you to working with these fabrics and demonstrating how to cut and add border print borders using her no-math method. Visit:

www.jinnybeyer.com/promos/bordertips

Adding Borders the Jinny Beyer Way

Jinny Beyer's border prints are designed specifically with the quilter in mind. Each fabric has a wide and a narrow stripe which coordinate in both design and color. Both stripes have mirror-image motifs which are essential for perfectly mitered corners. In addition, the two different stripes in the border print are separated by at least a half-inch so that a 1/4" seam allowance is provided for on both sides of the stripes. From selvage to selvage, there are always at least four repeats of each stripe across the fabric so calculating the yardage needed to border a quilt is easy: you need the length of the longest side of the quilt plus an additional half-yard to match design elements and allow for the miters at the corners.

For a video demonstration of this bordering technique, visit www.jinnybeyer.com/bordertips

Framing a Square Quilt

1. Place a strip of the border print across the middle of the quilt, centering a motif from the border at the exact center of the quilt. (Because of minor differences in seam allowances taken and stretching that can occur on bias edges, opposite edges of a quilt often measure slightly differently. Using a measurement taken from the middle of the quilt will help keep the quilt from "ruffling" at the edges.)
2. To mark the first miter, position a right-angle triangle so that one of the sides of the right angle runs along the bottom edge of the border print. Then carefully move the triangle until the angled side touches the point where the top edge of the border print meets the edge of the quilt. (See arrow in *Diagram 1*.) Mark, then cut the miter line. (Because the miter is cut right at the edge of the quilt, the seam allowance is already included.)
3. Carefully pick up the mitered side of the border strip and lay it on top of the strip on the opposite side of the quilt, right-sides together, placing the top edge of the strip at the edge of the quilt. If necessary, adjust the top strip so that the design motifs on the top and bottom match exactly. If you have centered a motif from the border print in the middle of the quilt, the designs should match at the edges. Cut the second miter. (Using the cut edge as a guide, rather than the triangle, ensures that your design motifs will be an exact match.)
4. Using this first mitered strip as a guide, cut three more identical pieces, making sure that the design on the border print is exactly the same on all four pieces.
5. Mark seam intersection dots on the short side of each of your border strips. To find the spot, simply draw a short line 1/4-inch inside the mitered edge and the short edge of the border strip. Mark the dot where the two lines intersect. Do the same for each corner of your quilt.
6. To sew the borders to the quilt, pin the mid-point of one of the border pieces to the middle of one of the edges of the quilt. Next, match and pin the dots on each side of your border with the dots on the quilt corners. Continue pinning the border to the quilt, easing in any fullness. (The edge of the quilt is usually a little wider than the center because of bias edges or seams.) Sew the border to the quilt, starting and stopping at the dots. Sew the mitered seams last, starting from the inside dot. When pinning the edges together, be sure to match the design elements on both pieces.

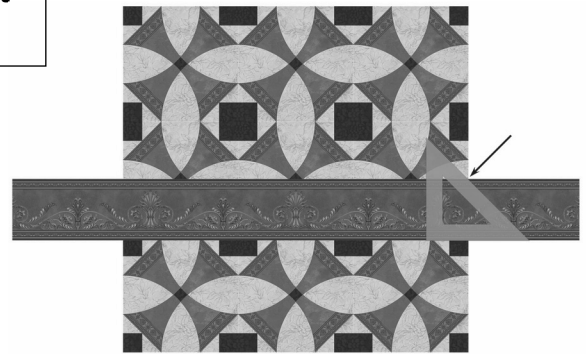


Diagram 1: Mark the miter.

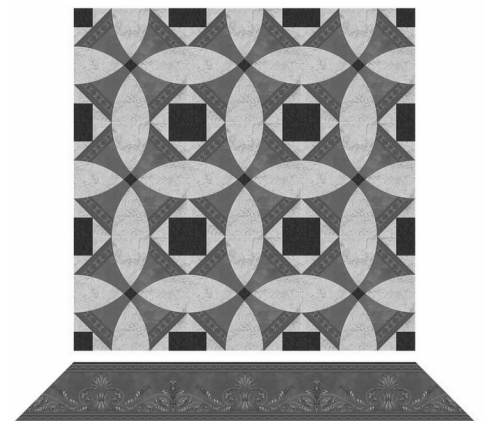


Diagram 2: Cut three pieces identical to the first.

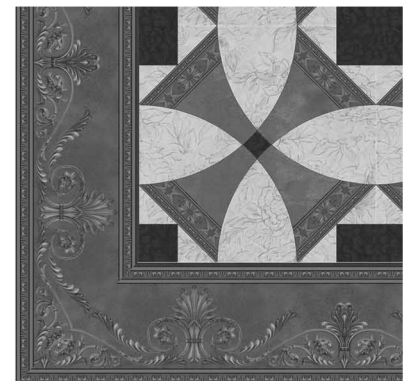


Diagram 3: Correctly cut and sewn borders will have designs that "flow" around the corners.

Framing a Rectangular Quilt

With rectangles, you cannot always be assured that the designs will automatically match at the corners so you must take an extra step.

1. First, follow steps 1-3 above and cut two identical strips for the short ends of the quilt. The pieces for the other two sides of the quilt must be cut differently: for the corners on all pieces to match, there must be a seam in these long pieces at the exact center of the quilt.

2. Place one of the cut strips on top of a length of the border print stripe, matching the fabric designs. Cut one miter to match the miter on the top strip. Set the top strip aside. Lay the newly cut strip on top of the quilt through the center, aligning one mitered edge with the edge of the quilt. Mark the center of the quilt on the strip as in *Diagram 4*. Move the strip from the quilt and cut it off $\frac{1}{4}$ " beyond the center mark. Using this cut strip as a guide, cut one more piece identical to it.

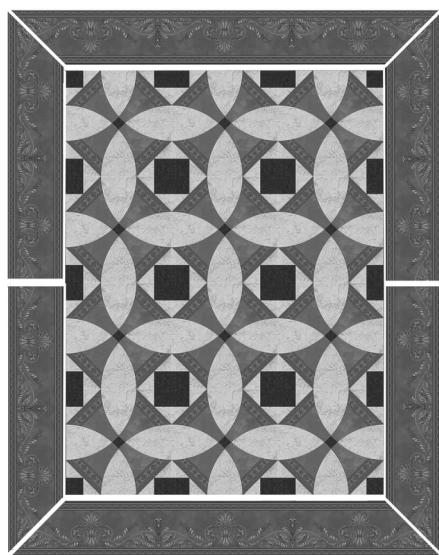


Diagram 5: The long borders on rectangular quilts have center seams.

Applying Multiple Borders

Jinny often designs quilts to make full use of the border prints. First, she will frame the quilt with the narrow border stripe, then add a coordinating fabric as a second border. The quilt is finished off with the wide stripe from the border print.

Jinny personally measures and adds each border separately. However, when the middle border is a fabric that doesn't have to be matched at the corners, she recommends the following method as being a little faster: Sew the second border to the first and then measure and cut them as a single border in the steps above. (If the quilt is rectangular, sew the second border to the first after it has been pieced.) Measure, cut and sew the third border separately after the first two borders have been completed and sewn to the quilt.

Binding the Quilt: When Jinny uses a border print to frame a quilt, she typically sews the binding to the back of the quilt and turns it to the front. This allows her to carefully hand-stitch the binding along a straight line printed on the border print fabric. For details, see www.jinnybeyer.com/binding.

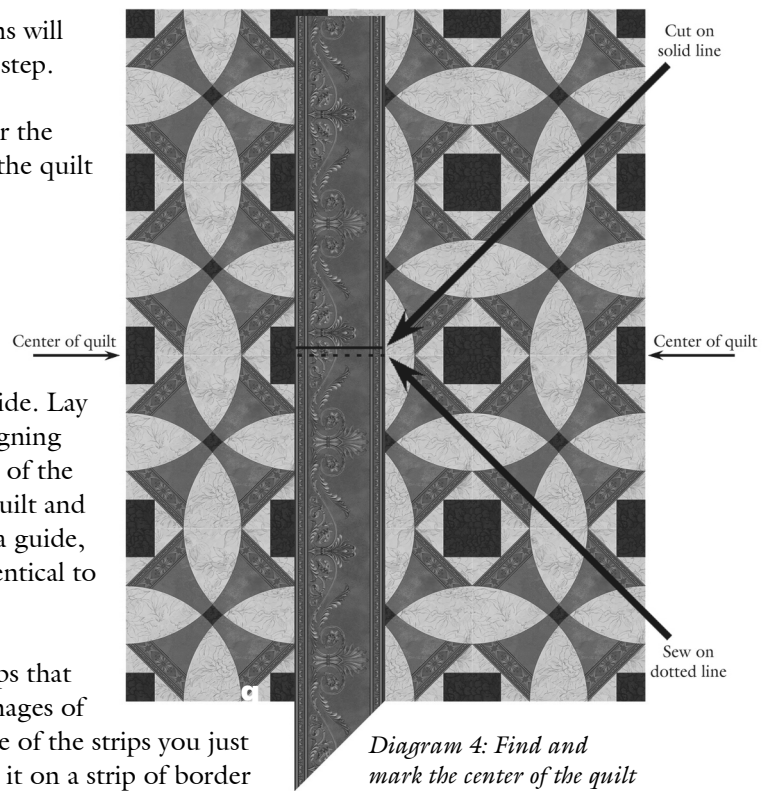


Diagram 4: Find and mark the center of the quilt on the border strip.

You also need two strips that are the exact mirror images of these pieces. Using one of the strips you just cut, flip it over and lay it on a strip of border print, matching the fabric design exactly. (The two strips will be right sides together.) Cut the miter and straight edges to match the top piece. Using the newly cut strip as a guide, cut one more piece.

3. Sew the seams at the middle of two mirror-imaged strips and attach these borders to the quilt as in Steps 5 and 6 in **Framing a Square Quilt**. Sewing the borders to a rectangular quilt in this manner assures that the corners will match. There will be a seam at the center of the long strips (*Diagram 5*), but the design at that center will mirror-image as well, allowing the design to flow around the quilt.

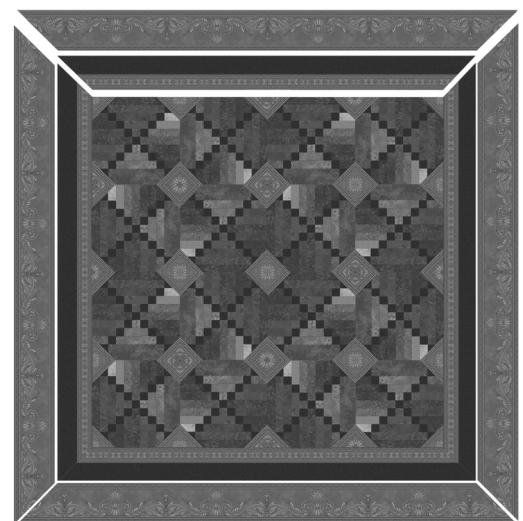


Diagram 6: Applying multiple borders